

AN RAN & ART



AN RAN

Born in Hebei Province, China, 1980.01.18

ACADEMIC APPOINTMENT

2008-present, Teaching at the Central Academy of Fine Arts (CAFA)

EDUCATION

- 2015 Start studying for a doctorate at the Central Academy of Fine Arts
- 2008 Received the master degree from the Central Academy of Fine Arts
- 2005 Received the bachelor degree from the Central Academy of Fine Arts
- 2000 Graduated from the High school of the Central Academy of Fine Arts

AWARDS

- 2014 "Zijin Design Award" in 2014 the First Jiangsu Cultural and Creative Design Competition, NanJing, China.
"Nomination Award " of the International Sculpture Competition of 2014 Qingdao International Horticultural Expo.
- 2011 "First Prize" of the Hebei International City Sculpture Competition, Work "Urban Jungle" located in the Main Avenue of Shijiazhuang City.
- 2010 "Excellent Award" for Ceramic Art Course of Central Academy of Fine Arts.
- 2008 "Second Prize" of the graduate works Exhibition of Central Academy of Fine Arts.
"YiLian Excellent Creative Scholarship" of Central Academy of Fine Arts.
- 2005 "First Prize" of the Olympic Snow Sculpture Contest of Aershan, Mongolia.
- 2004 "Excellent Award" of Architectural Enviromental Infrastructure Design for the Longgang Beach of Shenzhen, Shenzhen, China.
- 2003 "Second Prize" of Scholarship of Central Academy of Fine Arts.
"Second Prize" of Student Work Exhibition of Central Academy of Fine Arts.
- 2000 "Second Prize" of Admission Scholarship of Central Academy of Fine Arts.

ACADEMIC ACTIVITIES & CURATOR

- 2014 The 48th NCECA World Ceramic Education Conference, Milwaukee, America
As a Curator for "The Third Contemporary Ceramic Exhibition", Beijing, China.
- 2013 Exchange and teaching ceramic art at Munich Art University, Germany.
- 2012 Led the students to participate and teach in the America and China and Korea International workshop of Montana State University, Bozeman, America.
- 2011 As a Curator for "An Exhibition of China and Korea Contemporary Sculpture", Korea Center, Beijing, China.
Led the students to participate in International workshop with the American artists team from West Virginia University, Jingdezhen, China.
As a Curator for "The Second Contemporary Ceramic Exhibition", 798 Times Space, Beijing, China.
- 2010 Planned the "Yuejiyao International Academy Ceramic Art Camp" and led CAFA students participate in the Camp, Dehua, China.
The Second China National Ceramic Art Conference, Beijing, China.
- 2009 As a Curator for "Contemporary Ceramic Exhibition of Thirteen Artists", 798 Times Space, Beijing, China.
- 2006 CAFA & Rochester University International Symposium on Contemporary Ceramic Study of Material Workshop, CAFA, Beijing, China.
The First Annual 2006 Tsinghua University International Society for Ceramic Art Education and Exchange in China. Beijing, China.
- 2005 Participate in the "Five Baby of 2008 Olympics" of Olympic snow sculpture creation Workshop, Aershan, Mongolia.
CAFA & College of Ceramics of Alfred University Ceramic Art and Design Workshop, Beijing, China.
The First National Ceramic Art Education and Exchange in China, Xi'an, China.
- 2004 International Ceramic Art Workshop of Hawaii, The University of Hawaii, America.
- 2001 International Sculpture Art Workshop of "China - France impression", Beijing, China

PARTIAL EXHIBITIONS

- 2014 The 12th China National Exhibition of Fine Arts, Xi'an, China.
The First Jiangsu Cultural and Creative Design Competition 2014, won the "Zijin Award", NanJing, China.
"Porcelain Story" Modern Ceramic Art Exhibition, CAFA, Beijing, China.
Art Works Exhibition of Qingdao International Horticultural Expo 2014, Qingdao, China.
The National Exhibition of Outstanding Works of Fine Arts of "The 10th China Art Festival", National Art Museum of China, Beijing.
- 2013 "CAFA Teachers" Creation of Teachers of the Central Academy of Fine Arts, Art Museum of Central Academy of Fine Arts, Beijing, China.
2013 the 2st Datong International Sculpture Biennial, Datong, China.
- 2012 The "Ceramic Three Way" International Camp Exhibition, Montana State University, Bozeman, America.
The Second Guangdong Contemporary Ceramic Art Exhibition, Guangzhou, China.
The First International City Sculpture Exhibiton of Foshan, China.
"Sculpture of China" Sculpture Creation Review Exhibition of CAFA, Beijing, China.
- 2011 "Ancient & Modern" Exhibition of Xi'an International Horticultural Expo 2011, Tower of Xi'an, China.
An Exhibition of China and Korea Contemporary Sculpture, Korea Center, Beijing, China.
Work "Urban Jungle" won the First Prize of the Hebei International City Sculpture Competition, permanent located in the Main Avenue of Shijiazhuang City, China.
- 2010 Invited by 2010 World Expo, Work "Urban Scarecrow" located in World Expo Park permanent, Shanghai, China.
The exhibition of "Yuejiyao International Academy Ceramic Art Camp", Dehua, China.
The Exhibition of the Second China National Ceramic Art Conference, Beijing, China.
- 2009 The 11th China National Exhibition of Fine Arts, Xiamen, China.
"China Power" the exhibition of 2009 China Almanac of International Sculpture, Beijing.

- 2008 The 6th China Contemporary Young Ceramic Artists' Biennial Exhibition, Hang Zhou.
"Fairy Tale Today" the Exhibition of Outstanding Graduates' Works of Academy lights of
Central Academy of Fine Arts, Beijing, China.
- 2007 "Communication Between Sculptures and The City" Welcome World EXPO, Annual
Shanghai International Exhibition of Sculptures In 2007, Shanghai Sculpture Space.
"Tuo Er" Contemporary Ceramics Exhibition, Shanghai.
The Third International Exhibition and Competition of "Design for Sitting", Beijing, China.
"China, Japan, Korea Today Ceramics" Exhibition, Seoul Korea.
- 2006 The Exhibition of CAFA & Rochester University Ceramic Study of Material.
The Second Exhibition of Chinese Modern Craft Arts, Century Palace Museum, Beijing.
Beijing and Tokyo Sculpture Exchange Itinerant Exhibition, Beijing-Tokyo, China-Japan.
The Exhibition of The First Annual 2006 Tsinghua University International Society for
Ceramic Art Education and Exchange in China. Beijing, China.
The 5th China Contemporary Young Ceramic Artists' Biennial Exhibition, Hangzhou, China
- 2005 The Exhibition of CAFA & ALFRED Ceramic Art and Design Workshop, Beijing.
The Yong Artists Invitational Exhibition, Sun-Palace Gallery, Beijing.
The Exhibition of The First National Ceramic Art Education and Exchange in China, Xi'an.
- 2004 The First Ceramics Exhibition between China and Korea, Shanghai.
The Exhibition of International Emerging Ceramics Artists Invitational, FuLe Museum, China.
The Exhibition of " Ceramics for Use - A New Perspective", Hawaii, America.
The Exhibition of Lu Pinchang Studio, Today Art Museum, Beijing.

COLLECTIONS

"Urban Pastoral" collected by Culture Contest of Organizing Committee of Jiangsu Province.

"Urban Forest" collected by Shijiazhuang Government.

"Urban Scarecrow" collected by 2010 Shanghai World EXPO.

"Icy Heteroideus-3" collected by Art Museum of Zhejiang Province .

"Icy Heteroideus-1 " collected by collector Mr. Steve Alpert.

"Linear Space" collected by Shanghai Sculpture Space.

"Linear Space-3"collected by Today Art Museum.

"Linear Space-1"collected by Hamilton library of Hawaii University.

"Ethereal" collected by FuLe International Museum of Ceramics Art.

PARTIAL PUBLISHED PAPERS

"Ceramics meet Hawaii", *Hebei Pictorial*, December 2004.

"Touching the Modern Ceramics Art", *Theses of the First Annual 2006 Tsinghua University International Society for Ceramic Art Education and Exchange in China*.

"Careful Observation" *China Ceramic Artist*, Periodical-3 2009

"Literati +Artisan" *China Ceramic Artist*, Periodical-2 2010

"Shape of Spirit" *China Ceramic Artist*, Periodical-2 2011

"Raku in China" *Ceramics and Contemporary Sculpture*, 2011

"Exploration of Ceramic Material" *Ceramics and Contemporary Sculpture*, 2011

"Creation of Ceramic art" *China Ceramic Artist*, Periodical-2 2013

"Talk about Ceramics Again" *China Ceramic Artist*, Periodical-3 2014

PARTIAL AWRDS & INVITATIONS



PARTIAL ACTIVITIES



Teaching on the ceramic theory and literature appreciation class



The Ceremony of Central Academy of Fine Arts and Germany Meissen Group signed a strategic cooperation agreement



The 48th NCECA World Ceramic Education Conference, Milwaukee



Take the students to the United States to participate in the Ceramic Art Creation Camp, For the international students to open the clay sculpture class



Planned the "Yuejikan International Academy Ceramic Art Camp" and led CAFA students participate in the Camp



Take the students to participate in International workshop with the American artists team from West Virginia University, the local craftsmen throwing performance



Lecture in the Department of ceramics of Montana State University, 2012



Sculpture department of CAFA, Relief course



"First Prize" of the Hebei International City Sculpture Competition, Work "Urban Jungle" located in the Main Avenue of Shijiazhuang City.



Take the students to visit and study the traditional porcelain workshop in Jingdezhen



As a Curator for "An Exhibition of China and Korea Contemporary Sculpture", together with Korea sculptor



Take students visiting the famous sculptor Buck John and Deborah Butterfield studio



Led the students to visit the Fujian Chongwu large stone Factory, in 2010



International Ceramic Art Workshop of Hawaii, The University of Hawaii 2004



CAFA & College of Ceramics of Alfred University Ceramic Art and Design Workshop 2005



CAFA & Rochester University International Symposium on Contemporary Ceramic Study of Material Workshop 2006



"Excellent Award" for Ceramic Art Course of Central Academy of Fine Arts, with the students, 2010



Take the students in several major cities of the United States, visit the Museums, 2012

INTRODUCTION & PARTIAL WORKS

Human emotions and thoughts are three-dimensional. In artistic thinking, an artist is supposed to find a converging point between artistic perception and visual style by using his or her own perspective to observe and reflect. The essence and life of sculpture lies in the expression of allegorical feelings through space. Such a form of art creates infinity from finiteness by presenting various objects with different sizes in different environments.

The reason why art works can touch people, be acknowledged and last for ages is its infinite vitality, which is embodied in the rhythm, cadence, order and harmony of the works. Most important is to take full use of the properties of ceramic materials. During the process of sculpturing, I come to know profoundly that materials are the most direct medium for expressing thoughts and concepts and that awareness and technical skills have a big role to play in the use of materials. Concepts, uniqueness, creativity and technicality are all critical characteristics of art. This combination of diverse characteristics has reflected the trait of the times. Materials themselves also mirror the times and their unique potential to be used by art.

The conceptions and themes of my works all come from my life and my cognition of life. I try to express meanings with contours and imply my sentiments with meanings, so these seemingly abstract works fully reflects my true feelings. Every negligible matter may impose an impact on the spatial environment. Rhythmic arrangement of these matters can unleash their full potential to demonstrate beauty to people and sublimate the senses of people. This vitality is the highest pursuit of any work of art.

The series of my work, *Linear Space*, is an exploration of such spiritual connotation and meaning. By combining the rhythm of objects, the subtlety of space, the interweaving of lines, the penetration of light rays and the contrast of colors, I am able to present my feelings towards inner life and my pursuit of natural spirit. Objects can extend in the space and space can express both the compresence and the segregation of shapes and objects. The twining and extensiveness of lines make space more dynamic; The contrast of colors makes light more enchanting; The binding and penetration of webs give way for emotions to exude. Therefore, by strengthening the impacts of spatial distance and enriching the senses of these works, I present a distinctive visual glamour.

Another series of my work, *Urban Pastoral Dream*, consists of *Urban Pastoral* , *Urban Scarecrow*, *Urban Jungle*, etc.I turn the old-day images in rural fields to industrialized images in the orderly modern metropolises. In these works, I try to display the lifestyle and aesthetic tendencies of modern metropolitan people.Those vivid figures in the countryside exist no more in the rapid urbanization process, but people still yearn for the “pastoral life”. Thus, I attempt to build such a spiritual atmosphere, hoping that this series of *Urban Resort Dream* will make the romantic pastoral fairy tale last in a humorous way.

Creating works of art is both an expression of sense and sensibility. It is also a handling of the relationship between meanings and means. To find what meanings the works convey, one just needs to look at the relationship between the works’ shapes, spatial arrangements and the choice of materials. If this relationship is correctly and appropriately built, the works will be well done regardless of the uneven distribution of attention to different elements. I have always been considering the ways to express meanings and feelings through different forms and to offer some abstract conceptual guidance for people to appreciate the works. I desire to be a man of letters, but I aspire more to be a craftsman who can incorporate the “verve and quintessence” in his works with admirable craftsmanship.



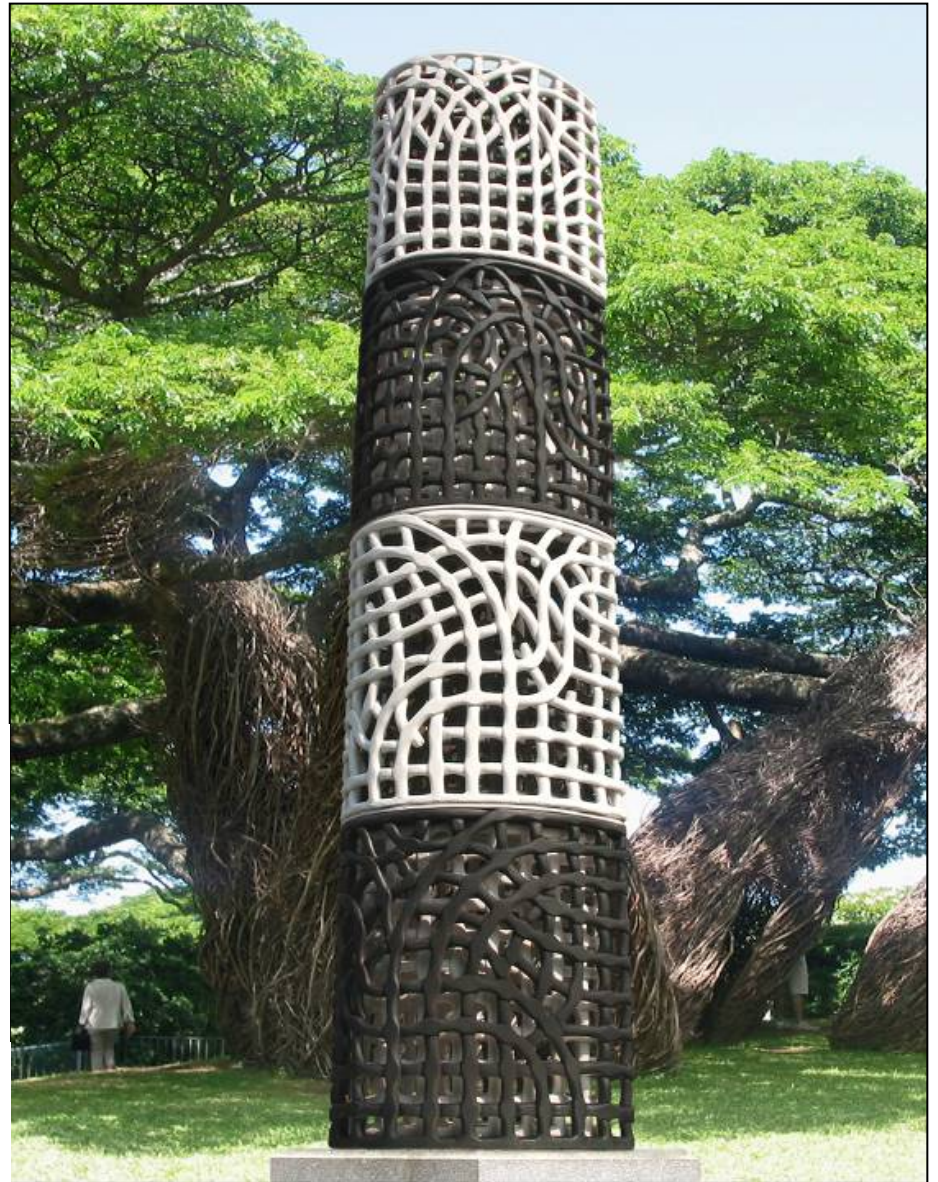
Logic Body 78x36x26cm earthenware





Asky 90X40X28cmX3 earthenware , stainless steel





Linear Space 230x52x36cm earthenware



Urban Pastoral 120x115x50cm earthenware, stainless steel



Urban Scarecrows 250x320x40cm earthenware, stainless steel Located in 2010 World Expo Park permanent



Urban Scarecrows

The sculptor transforms the shape of a scarecrow most likely found in villages and countryside into industrialization and order of modern vibrant city. The up-to-date materials utilized and orderliness of the structure of the design can accurately reflect the concept of living in contemporary cities and aesthetic inclinations. Refining “urban scarecrow” quickly exhausting our sweet memories of the past, the fairytale of “urban protector” we dream of amidst rapid urbanization may be passed down from generation to generation in a humorous fashion.

World Expo 2010 Shanghai China, Located in World Expo Park permanent, Shanghai, China.



Urban Scarecrows-2 190x50x28cm earthenware, stainless steel



Urban Jungle 1400x900x600cm stainless steel

Urban Jungle

The form of the work is minimal and innovative. It combines the modern stainless steel and the ecological outline of tree. Utilizing the corridor structure of traditional Chinese architecture, it is overwhelmed with the spirit of the future and natural beauty, and achieves perfect integration of sculpture and architecture. The viewer enters the piece and would feel the intense visual impact and the jungle-like mystery. It expresses the urbanite's pursuit and yearning for great nature.

The "First Prize" of the Hebei International City Sculpture Competition, permanent located in the Main Avenue of Shijiazhuang City, China.



Long Corridor - traditional architecture





Urban Jungle 1400x900x600cm stainless steel



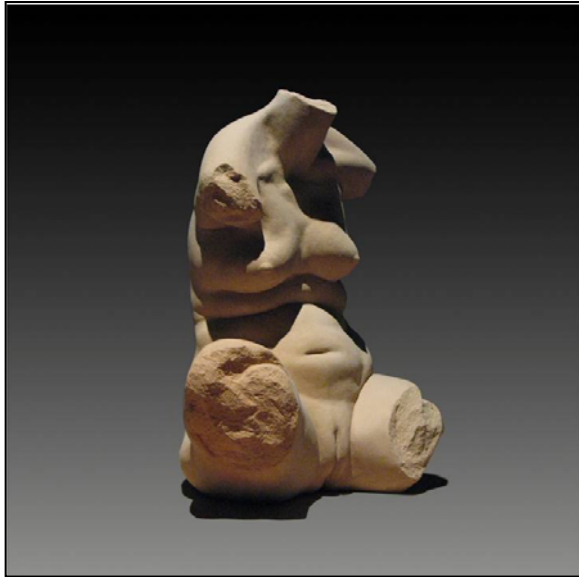
Urban Jungle 1400x900x600cm stainless steel



Icy Heteroideus-1 120x90x65cm earthenware , stainless steel



Life Column 140x38x26cm earthenware



Autumn 43x35x28cm earthenware



Leisurely 26x35x18cm earthenware

Rest 16x20x5cm earthenware



Breezeless

Once ardent in youth
Once arduous for career
Once glorious and once desperate
On a breezeless day.....
With a tranquil and peaceful mind
Listens to the passage of time
Recollects a piece paper of the life.....



Breezeless 90x40x85cm earthenware



Breezeless 90x40x85cm earthenware





Obscurity 120x58x55cm earthenware

Obscurity

No clamor made by it for reward, no glory achieved and no monument established for it, this experienced hand was once powerful enough to spread hope and shoulder responsibilities. It always works hard in obscurity and witnesses the vicissitudes of the world. Every wrinkle etched on this hand leaves us in exhaustible source of inspirations.





Hesitation 200x65x50cm clay



Shanghai Lady 105x80cm sketch

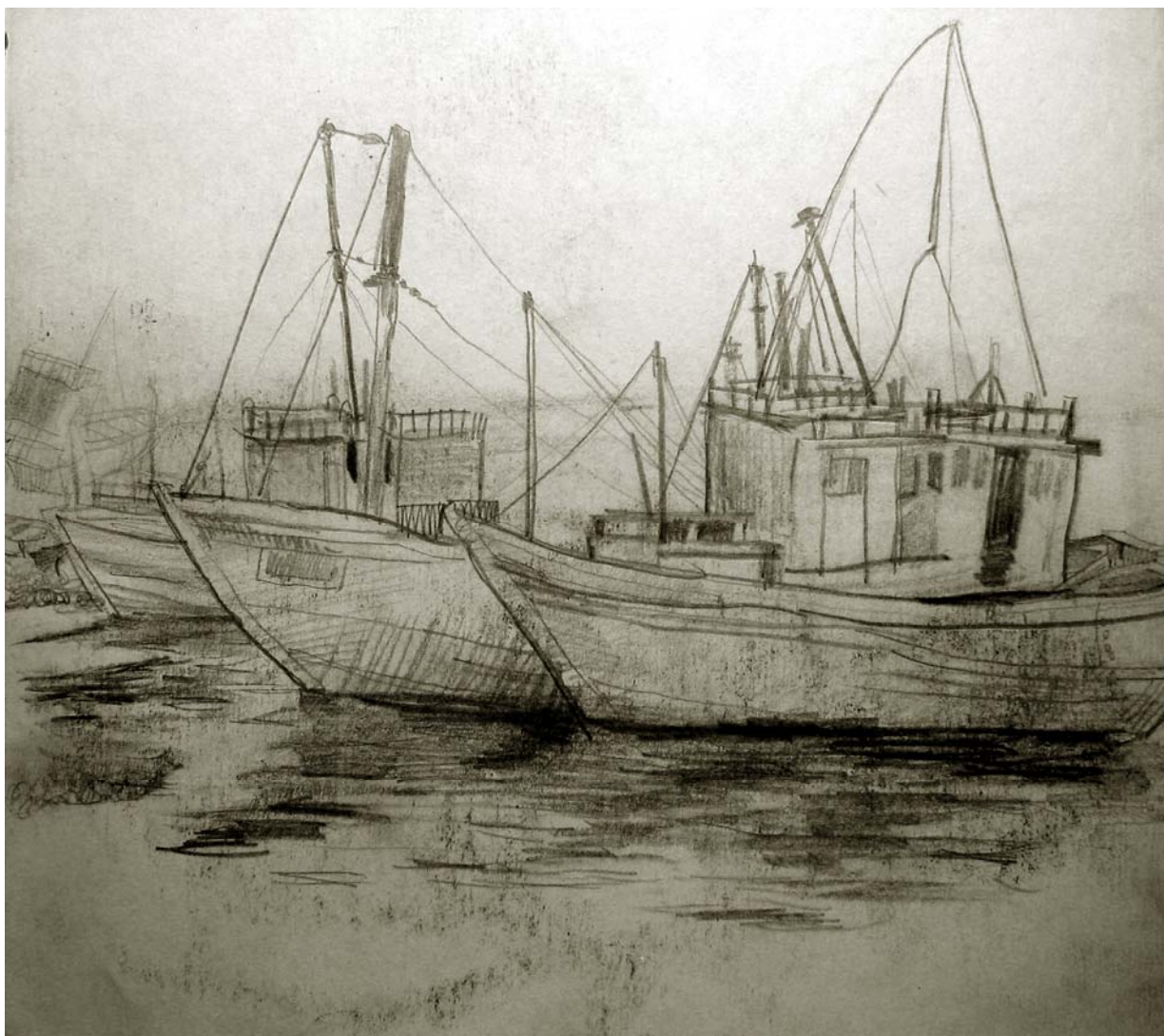


The Little Girl Lying on the Adobe Kang 26x18cm sketch

Village President 26x25cm sketch



Chinese Kung Fu 90x60cm sketch



Fishing Village in the Morning 26x25cm sketch



Mountain City Scenery 60x45cm oil painting



Forgotten Small Alley 60x46cm oil painting

An Ran

Sculpture Department, Central Academy of Fine Art
No.8 Hua Jia Di South Street
100102 Chaoyang District
Beijing, China

Tel: (+86)15801668663
Fax: (+86) 010-64771079

anjan5168@hotmail.com

