



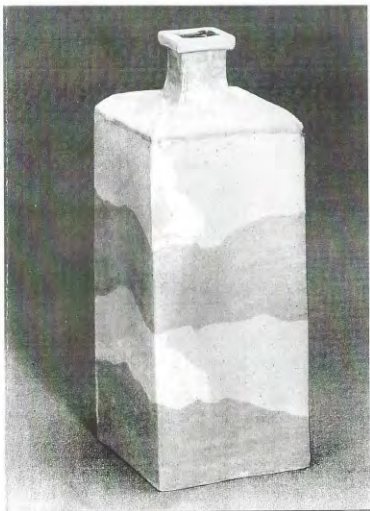
Awarded Honored Key of Birmingham City from the Mayor, 1982, U.S.A.



The Members of The Birmingham  
Museum of Art invite you to a  
reception for the exhibition,  
*Roe Kyung-jo:*  
*Contemporary Korean Ceramics*

Sunday, August 15  
Birmingham Museum of Art

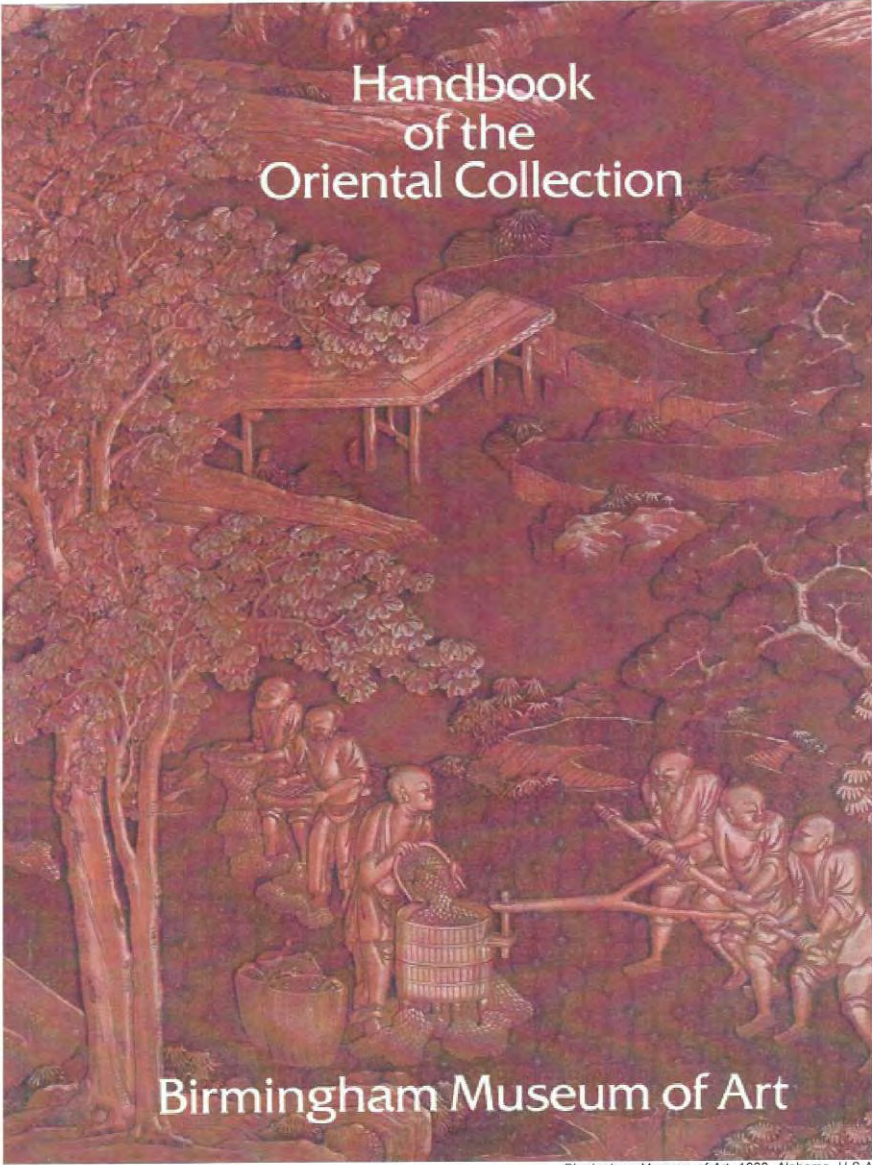
West Lobby  
3:00-5:00 p.m.  
Refreshments and meet the artist



Members of the Birmingham Museum of Art  
2000 8th Avenue North  
Birmingham, AL 35203

Non-Profit Org.  
U.S. Postage  
**PAID**  
Permit No. 2828  
Birmingham, AL

Commemoration Postcard, The Birmingham Museum of Art, 1962, Alabama, U.S.A.



Handbook  
of the  
Oriental Collection

Birmingham Museum of Art

## 89. Bottle

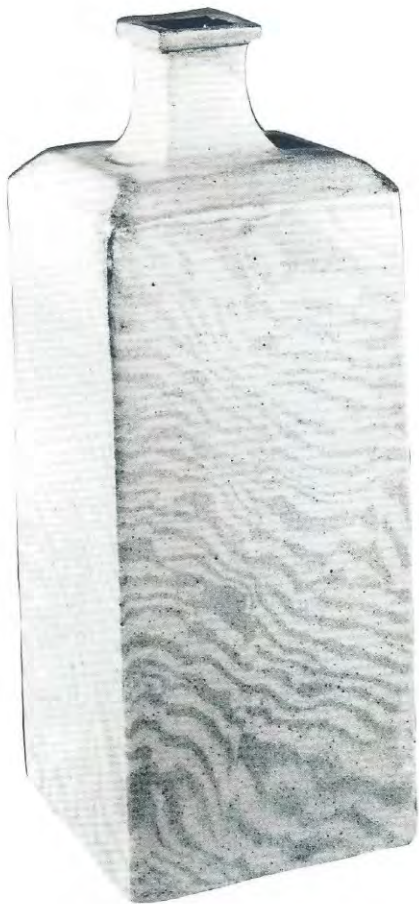
Roe Kyung-Joe (born 1952)  
1981  
Porcelain, Yeorimum ware  
23.0 x 9.0 (9 $\frac{1}{4}$  x 3 $\frac{1}{2}$ )  
Gift of Mr. and Mrs. Tea Sam Roe  
1982.221

Roe Kyung-Joe is a contemporary ceramist who is rapidly gaining an international reputation for his innovative handling of the clay medium. Roe began his artistic career working with white porcelain in the tradition of the Yi dynasty. He then experimented with overglaze pottery, and pursued the techniques of native *punch'ong* wares. He is currently concerned with creating the effects of marbled ware.<sup>1</sup>

Roe represents the individual studio artist in the best sense. He mines his own clay and carefully colors it by adding metallic oxides to produce *yeorimum* marbled ware. To establish the modern identity of his works, Roe favors angular forms over the round ones of traditional Korean ceramics.

The Birmingham bottle was built by the slab method. The patterns found on the vertical sides indicate that the body was constructed by the joining of two right-angled slabs rather than four single ones; the marbled effect is continuous along two vertical edges. The top portion of the bottle consists of a beveled shoulder surmounted by a slightly splayed neck which terminates in a flat, square mouth. The exposed exterior is covered in a clear glaze which has been partially wiped, while the interior is coated in an iron-brown glaze. The irregularly recessed bottom has a cloth texture, with a stamped seal impression of Kyung-Joe.

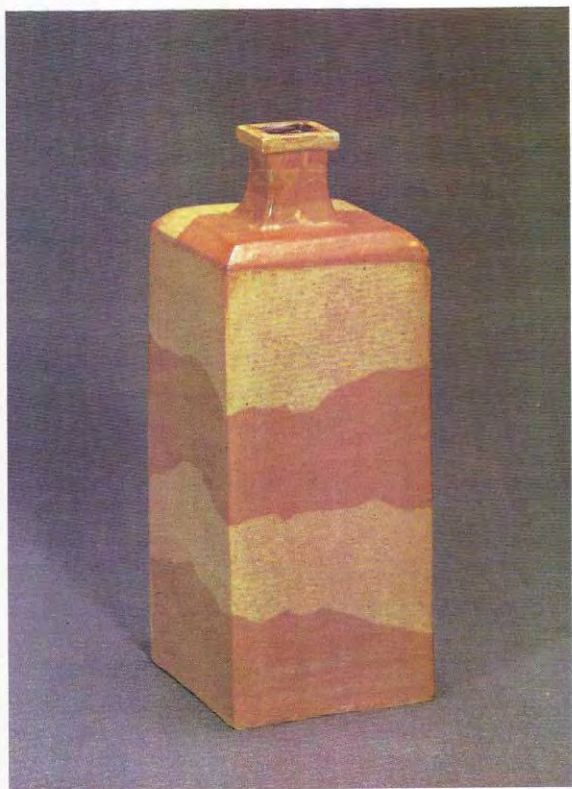
1. For an account of works by the artist, see Kyung Sung Lee, et al., *Invitation to the 10 Years Work with Clay* (Seoul: Public Information Office, Embassy of Japan, 1985).



# Tradition and Korean Ceramics Today



Korean Overseas Information Service  
Seoul, Korea



The 100th Korea-America Memorial Korean Contemporary Art Festival  
/ Korean Culture Service, New York, U.S.A.

**PART2 アメリカ・アフリカ地区**

15:40~16:40



**北村 伸**  
 (Kitamura Kenji)  
 1947年生まれ。東京都、中央大学文学部卒業。上智大学を修了。主要著作に『東洋の美術史』、『東洋の美術史』。



**ガーリー・モーラ**  
 (Gary Moller)  
 1947年生まれ。アメリカ人。1967年、コロラド州立大学卒業。その後、テキサス州立大学で修士号を取得。主要著作に『アフリカの美術史』、『アフリカの美術史』。



**クロード・フロッセ**  
 (Claude Fresson)  
 フランス生まれ。1947年生まれ。1967年、パリ大学卒業。その後、パリ大学で博士号を取得。主要著作に『アフリカの美術史』、『アフリカの美術史』。



**森 淳** (Mori Shinpei)  
 1947年生まれ。大阪府出身。1967年、大阪府立大学卒業。その後、大阪府立大学で博士号を取得。主要著作に『アフリカの美術史』、『アフリカの美術史』。

**現代世界土器学会実行委員会**

事務局：大阪府南河内郡河南町東山 大阪芸術大学(アフリカ研究室)

代表 森 淳

電話 (0721) 93-3781・内線356

**NHK 公開シンポジウム**

**『世界の土器』**

～シリアの海中から20世紀の土器まで～

と き **10月14日(土)** 13:30～17:00

と ころ **広島県立美術館・講堂**



主 催 / **NHK** 広島放送局・現代世界土器学会実行委員会

後 援 / 広島県・広島県教育委員会・89海と島の博覧会協会・中国新聞社  
**NHK** サービスセンター

協 賛 / 小原流芸術参考館・ロイヤル美術・乃村工芸社・太陽K.K.  
 神港産業・IKUKO



## 開会あいさつ

13:30~13:40



北本 正彦 (北本正彦)

1959年生まれ。大阪で印刷機製造企業。長年においた電子コンピュータセンターとして品質管理の自動化開発を「ひらしま」の経営アドバイザーを務める。株式会社リーテック。

## 基調報告

13:40~14:00



寺田 隆敏 (寺田隆敏)

1926年生まれ。1946年東京大学経済学部卒業後、同大学経済学部。以後同大学として専攻。1970年代に東京大学同窓会を創設し、1980年代に会長を務めた。

## シンポジウム

# 「各国の現状とこれから」

### PART.1 アジア地区

14:10~15:30



ハタ ヒロシ

1947年生まれ。1970年東京大学経済学部卒業。その後、1975年東京大学経済学部助教授。1980年東京大学経済学部教授。1985年東京大学経済学部教授。1990年東京大学経済学部教授。1995年東京大学経済学部教授。2000年東京大学経済学部教授。2005年東京大学経済学部教授。2010年東京大学経済学部教授。2015年東京大学経済学部教授。2020年東京大学経済学部教授。2025年東京大学経済学部教授。



寺田 隆敏

1926年生まれ。1946年東京大学経済学部卒業。以後同大学として専攻。1970年代に東京大学同窓会を創設し、1980年代に会長を務めた。



森岡 成彦

1947年生まれ。1970年東京大学経済学部卒業。その後、1975年東京大学経済学部助教授。1980年東京大学経済学部教授。1985年東京大学経済学部教授。1990年東京大学経済学部教授。1995年東京大学経済学部教授。2000年東京大学経済学部教授。2005年東京大学経済学部教授。2010年東京大学経済学部教授。2015年東京大学経済学部教授。2020年東京大学経済学部教授。2025年東京大学経済学部教授。



藤 田 隆

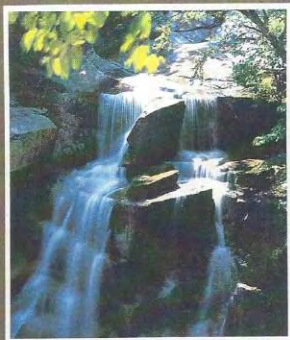
1947年生まれ。1970年東京大学経済学部卒業。その後、1975年東京大学経済学部助教授。1980年東京大学経済学部教授。1985年東京大学経済学部教授。1990年東京大学経済学部教授。1995年東京大学経済学部教授。2000年東京大学経済学部教授。2005年東京大学経済学部教授。2010年東京大学経済学部教授。2015年東京大学経済学部教授。2020年東京大学経済学部教授。2025年東京大学経済学部教授。



ドノ・健二

1947年生まれ。1970年東京大学経済学部卒業。その後、1975年東京大学経済学部助教授。1980年東京大学経済学部教授。1985年東京大学経済学部教授。1990年東京大学経済学部教授。1995年東京大学経済学部教授。2000年東京大学経済学部教授。2005年東京大学経済学部教授。2010年東京大学経済学部教授。2015年東京大学経済学部教授。2020年東京大学経済学部教授。2025年東京大学経済学部教授。

NATURE  
et  
RELIGION  
dans la  
céramique coréenne  
contemporaine



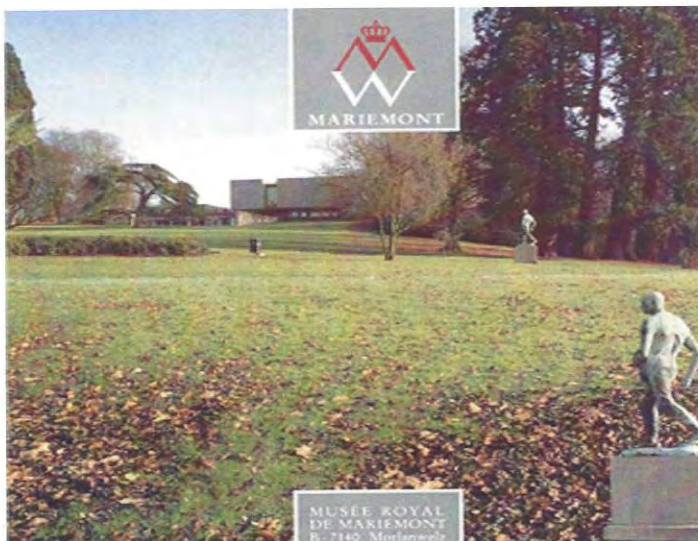
Collections du Musée royal de Mariemont

NATURE  
et  
RELIGION  
dans la  
céramique coréenne  
contemporaine

BIE VAN GUCHT

Collections du  
MUSÉE ROYAL DE MARIEMONT  
Établissement scientifique de la Communauté française de Belgique

1996



Collections du Musée Royal de Mariemont, 1996, Belgium

The rd  
Workshop for Korean Art Curators

The Korea Foundation  
invite you to a slide presentation and workshop of  
Roe Kyung-Joe:  
Contemporary Korean Ceramics

Saturday, September, 15, 2001.  
Roe Kyung-Joe Studio  
10:00am-1:00pm



The 3rd Workshop for Korean Art Curators, Yang pyeong Hoe studio, 2001, Korea

# 2002 국제도자워크숍

International Ceramic Workshop

游於藝 동양도자의 정신을 찾아서

Seeking for the Eastern Ceramic Spirit



재단법인세계도자기엑스포

World Ceramic Exposition Foundation

12세기(고려)의 연리문 도자기가 잔, 함 등 소수 남아있다. 이러한 고려시대 도자 제작의 전통을 현대적인 패턴(추상적인 문양)으로 표현하였으며 형태는 조선시대 백자가 병을 모티브로 하였다.



연리문 기 緣理紋 器 Yeonrimun(Marble-Ware)  
2001, 9×9×21cm, 착색소지(백토, 적토 등)





2022. International Ceramics Workshop Artists, in Roe's Worktable  
2022. 9. 6~15, Icheon World Ceramic Center, Korea

- Yoshita yukio, Japan
- Inkyu choi, Korea
- Gillhong han, Korea
- Janet Mansfield, Australia
- Karin Widnas, Finland
- Sugimoto Sadamittsu, Japan
- Roe kyung jo, Korea

## ROE KYUNG-JOE



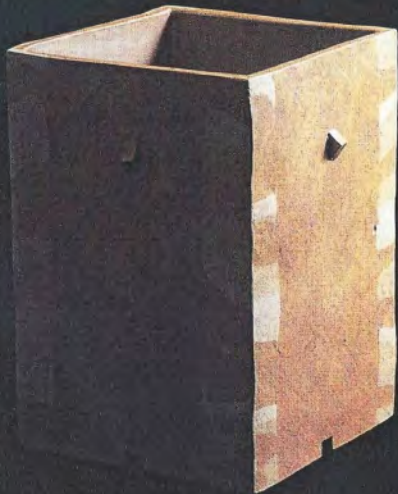
October 1-31, 2003  
Tuesday - Saturday  
12noon - 6pm

Roe Kyung-joe, born in 1951, made his debut in 1979 when he received an award at one of prestigious ceramic competitions. After studying ceramics at Kyunghee University and its graduate school he went to Japan in 1977 to continue his ceramic training at Kanazawa College of Art and Craft. He is now serving as a professor at the Kookmin University College of Design. The current tendency of his artwork is to revive the "yeollimun" ware (marbled ware) of the Goryeo Dynasty which emerged in the 13th century, but soon disappeared due to its technical difficulties. Upholding its lofty aesthetic value, Roe embraces as a whole the texture, fragrance and color of soil. Roe's work, in terms of shape, appears less decorative and more pared-down. He draws the motif of square-shaped case and "hap" (vessel with a lid) from the Joseon Dynasty's refined square bottles between the 18th and 19th centuries. Attractively decorated with simple ears, those works resemble the shape of nature without adding any artificial quality. He often alludes to his "yeollimun" ware "I think it important for my work to be meticulously counterbalanced and decoratively beautiful, giving a simple and elegant feeling." Suggestively demonstrating the traditional beauty of Korea through his long years of experience and refined sensibility, Roe creates the new style of ceramic art. Such attempt is now in the focus of attention internationally, arousing much expectation in ceramic lovers and critics. His works are now included in the collection list of Birmingham Museum of Art, Smithsonian American Art Museum, British Museum and Musee Royal de Marimont.

### TONG-IN Gallery New York

16W. 32nd Street Suite 503 New York, NY 10001-3814  
Tel 212.564.2020 Fax 212.564.1180 Toll-free 1/800/228/5401

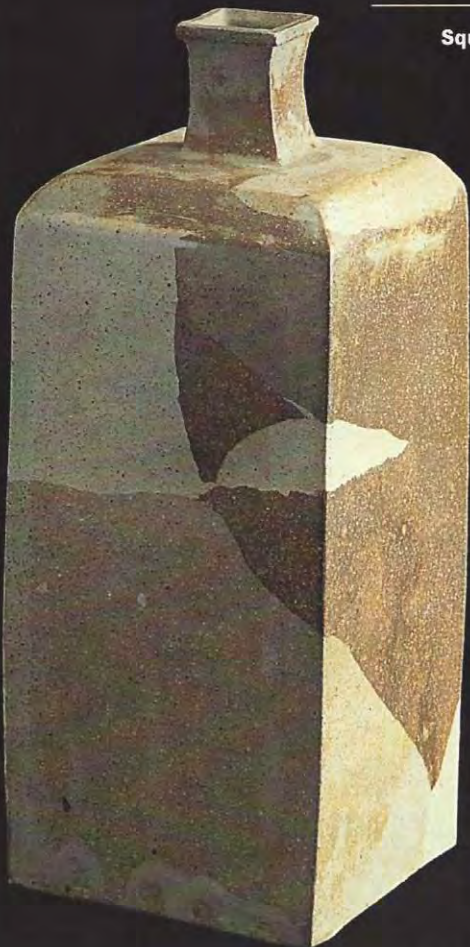
## ROE KYUNG-JOE



Opening Reception October 1, 5:30-7:30pm

# ROE KYUNG-JOE

Square Bottle "yeollimun" ware  
(marble ware) 9\*9\*23(H)  
Oct. 1, 2003 ~ Nov. 1, 2003



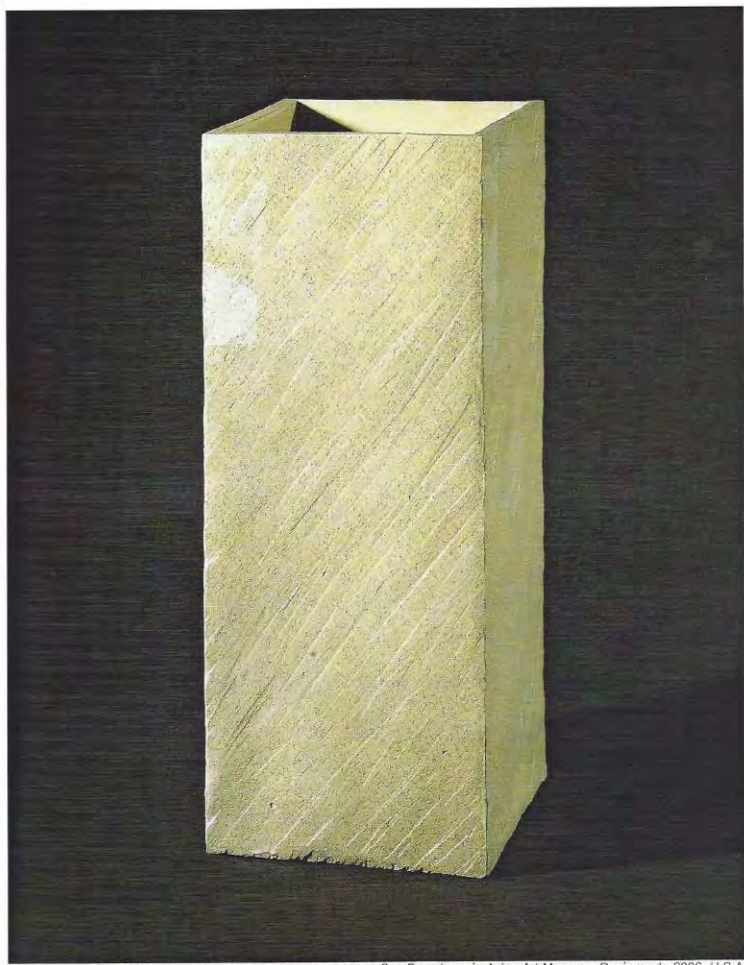
**TONG-IN GALLERY NEW YORK**

16W. 32nd St. Suite 503, NYC 10001  
T) 212.564.2020, F) 2120.564.1180  
[www.tonginstore.com](http://www.tonginstore.com), [tongin@att.net](mailto:tongin@att.net)



THE ART OF KOREA HIGHLIGHTS FROM THE COLLECTION OF  
SAN FRANCISCO'S ASIAN ART MUSEUM

The Art of Korea HIGHLIGHT FROM THE COLLECTION OF San Francisco's Asian Art Museum, 2006, U.S.A.

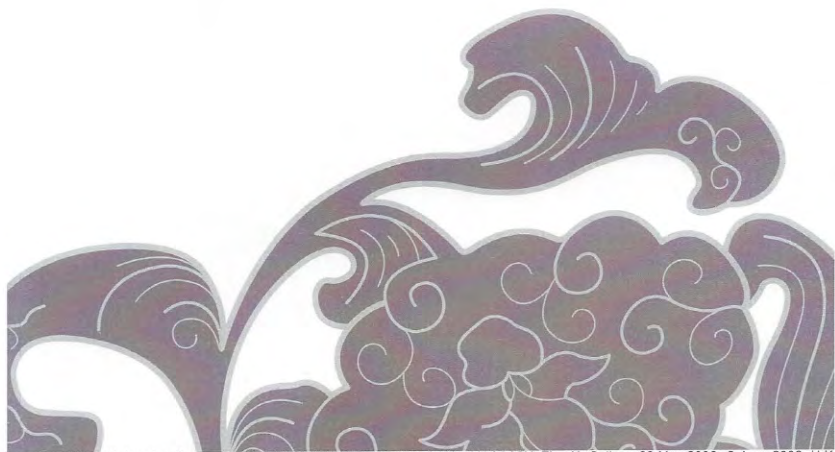


The Art of Korea HIGHLIGHT FROM THE COLLECTION OF San Francisco's Asian Art Museum, Roe's work, 2006, U.S.A.

The 4th London Korean Festival 2006

# TRADITIONAL YET CONTEMPORARY

MODERN KOREAN CERAMICS EXHIBITION



The 4th London Korean Festival 2006, TRADITIONAL YET CONTEMPORARY, The Air Gallery, 29 May 2006~3 June 2006, U.K.



Siyudo and Gyeongdo Artists  
**Roe, Kyung-Jo**



Marbling Box, 25.5 x 23 x 23 cm



SOFA Chicago 2007



SOFA CHICAGO 2007





PALM BEACH 3, 2008



PALM BEACH 3, 2008





General Agreement for Cooperation Between Ambassade de France en Coree And Kookmin University / Nov. 25, 2008

Marc LAMY 마크 라미 - 주한프랑스대사관 문화과 부참사관



General Agreement for Cooperation Between Kookmin University And BrobyGrafiska Utbildning , Sweden / Nov. 25, 2008



Kookmin UIT Design International Symposium - Design Culture and Contents in Ubiquitous Age / Nov. 27, 2008



ANDREW MASKE / University of Kentucky Art Department- Assistant Professor / Area: Art History, Asian Art/Japanese Art / 2009. 1





MOU Signing Ceremony Between Tsinghua Univ.(China) and Kookmin Univ. / June 24, 2009





MOU Signing Ceremony Between Waseda Univ.(Japan) and Kookmin Univ. / July 31, 2009

# Contents

## Regulars

- 2-3 News  
6-7 In depth  
10 Goldsmiths  
in the news  
11 Goldsmiths people



Cover:  
Pat Loughrey,  
Warden of  
Goldsmiths  
from Monday  
19 April

The newsletter for  
Goldsmiths staff.  
Staff Hallmark is  
published six  
times a year

### Contact us

E-mail: [hallmark@gold.ac.uk](mailto:hallmark@gold.ac.uk)  
Phone: 020 7919 7976  
Visit Hallmark online at  
[www.gold.ac.uk/hallmark](http://www.gold.ac.uk/hallmark)

We welcome your suggestions for articles. Copy deadline for the next edition is **10 May**. Inclusion is at the discretion of the Editor, who reserves the right to edit all material as appropriate.

Editor Rebecca Watts  
Sub-Editor Adam Peers

Hallmark is printed on 9Lives Offset, which is manufactured from 100% recycled fibre. Product certification: FSC 100% recycled, NAPM recycled approved.

# News

## Memorandum of Understanding between Goldsmiths and Kookmin University



Professor Simon McVeigh  
with Professor Roe Kyung-Jo

A new strategic collaboration with Kookmin University in Seoul, Korea was initiated in February with the signing of a Memorandum of Understanding with Professor Roe Kyung-Jo, Dean of Kookmin University's esteemed Design School.

The Memorandum of Understanding enables Mike Waller, Lecturer in Design, and the Pi-Studio (Prospect and Innovation Research unit) within the Department of Design to develop a range of collaborative projects, including summer schools

for Korean design students, and joint research involving staff visits on both sides in areas such as design innovation theory and practice. It also opens the way to commercial projects with Korean companies, with the support of the Business Development Office.

This is seen as a key development in Goldsmiths' international strategy, as one of a number of strategic collaborations in Asia currently being negotiated by the Deputy Warden, Professor Simon McVeigh.

## Warden's Studentship

More than £5000 has been raised for the Crossick Studentship. Depending on how much is finally given, the Studentship will support one or several Goldsmiths graduates undertaking taught postgraduate programmes. The fund was established to honour the contribution the Warden has made during his five years at Goldsmiths. Professor Crossick says: "I was taken aback at the amount that has so far been raised, and am enormously grateful to everyone for their generosity."

If you would like to donate, visit [www.gold.ac.uk/alumni](http://www.gold.ac.uk/alumni).





### **SHELF 3: Modern studio ceramics**

- 16** Vessel, Roe Kyung-jo (born 1951), 2003, slab-built unglazed marbled stoneware

2010 Ceramics Study Galleries Permanent Exhibition  
Victoria and Albert Museum, London, U.K.



Seoul Design Fair 2010 – Living Culture in Korea, China, Japan  
/Jamsil Sports Complex, Seoul Design Foundation, Korea, 2010



Seoul Design Fair 2010 – Living Culture in Korea, China, Japan  
/ Jamsil Sports Complex, Seoul Design Foundation, Korea, 2010.



Workshop 2010 – COLLEGE *for* Creative STUDIES,  
201 E. Kriby Detroit, Michigan, 48202-4034, U.S.A  
2010. 10. 31-11. 4



Workshop 2010 – COLLEGE for Creative STUDIES,  
201 E. Kirby Detroit, Michigan, 48202-4034, U.S.A  
2010. 10. 31~11. 4

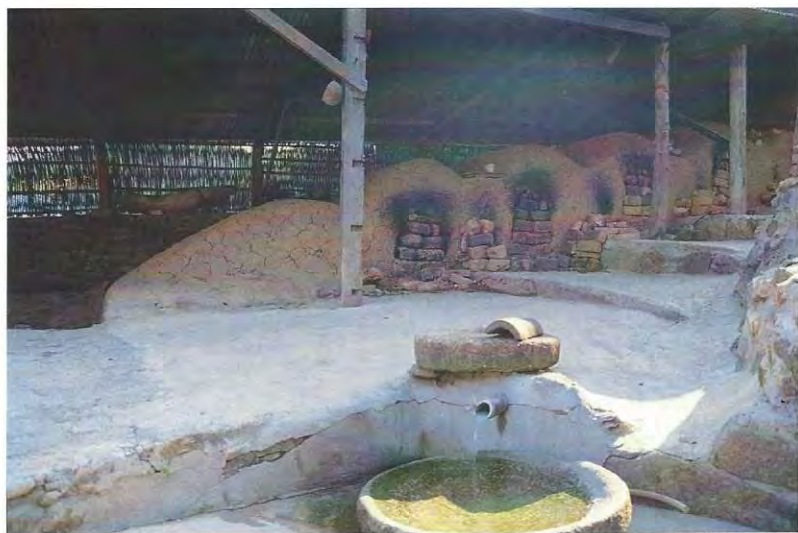




THE 13TH WORKSHOP FOR KOREAN-ART CURATORS  
KOREA FOUNDATION, KOREA / 2011. 10. 28



THE 13TH WORKSHOP FOR KOREAN-ART CURATORS  
Roe Studio, Korea / 2011. 10. 25



since 1981~1994, Roe studio ,Paldang, Korea



winter landscape of Roe studio, Yang pyeong, Korea



with Janet Mansfield (editor of *Ceramics Art and Perception*), Roe studio, September, 2003



with Gabi Dewald (editor of Ceramic Magazin, Deutschland), Helen Drutt (U.S.A.), Roe studio, 2004



visited Roe studio, 2005, Yang pyeong, Korea  
Chung Yang-Mo (Former Director of Nation Museum of Korea)  
Hayashiya Selzo (Former Director of Tokyo Nation Museum)  
Ikutaro Itoh (Director of The Museum of Oriental Ceramics, Osaka)



visited Roe studio, Enomoto Toru(Director of Museum of Modern Ceramic Art, Gifu) and his wife, Sept. 2003, Korea





with Professor Margaret Buck (Head of St.Martins College of Art and Design) December, 2004, London, U.K.