

承上启下

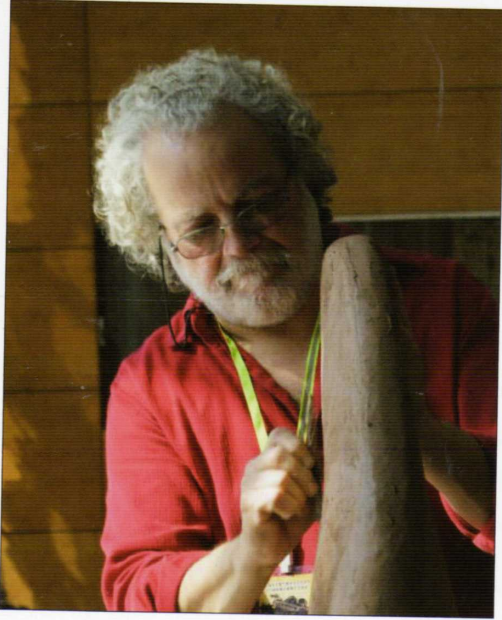


會古通今



第四届“宏光紫气”国际陶瓷艺术文化交流周

THE FOURTH "HONG GUANG ZI QI" INTERNATIONAL CERAMIC ART CULTURAL EXCHANGE WEEK



吉列尔莫·马勒  
GUILLERMO MAÑÉ



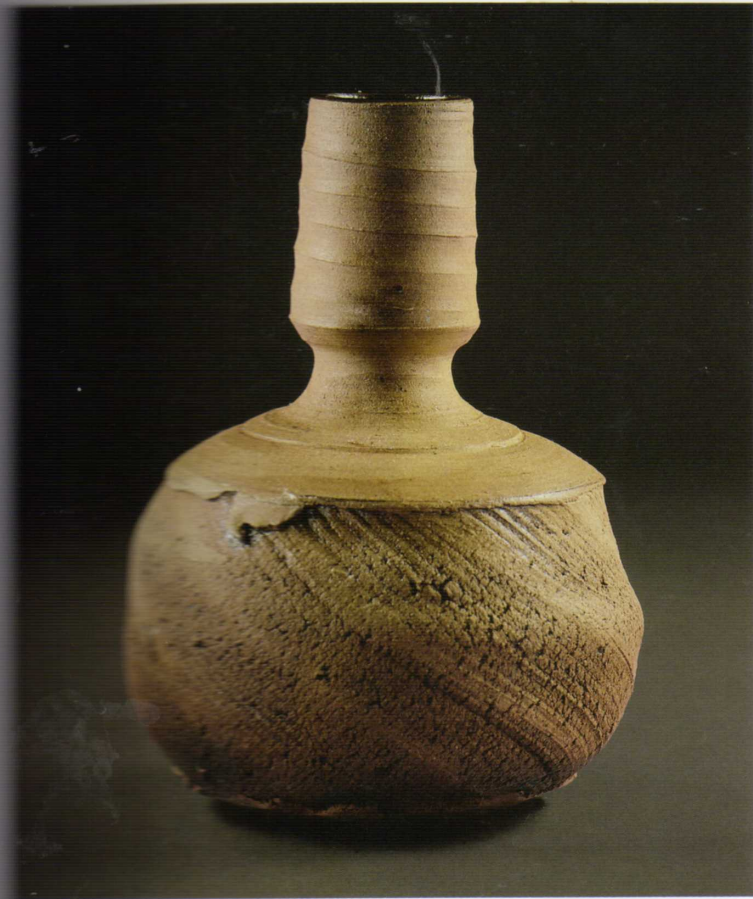
1958年出生于布宜诺斯艾利斯，陶艺家、艺术教授。1983-1984年陶瓷艺术与技术专业，获得意大利佛罗伦萨国际陶瓷学会政府奖学金。1981-1982年在阿根廷布宜诺斯艾利斯国家陶瓷学校担任陶瓷艺术教授。

1994 - 2014年在阿根廷 Xul Solar 公立学校担任陶瓷教授。2005 - 2008年在阿根廷“Emilio Pettorutti 国家艺术学院担任陶瓷教授。2008 - 2009年在阿根廷马德普拉塔市陶瓷学校担任陶瓷艺术系主任。

(Buenos Aires, 1958) Ceramist and art Professor. 1983-84-Ceramics art and technicals. Scholarship from OAS and Italian Governement. State Ceramic Institute. Sesto Fiorentino. Florence. Italy.

1981 - 1982 Ceramic art Professor. National Ceramic School. Buenos Aires. Argentina.

1994 - 2014 Ceramic Professor at “Xul Solar” State School of Art. Junín. Argentina. 2005 - 2008 Ceramic Professor at “Emilio Pettorutti” State School of Art. Pergamino. Argentina. 2008 - 2009 Master in Ceramic Art at Mar del Plata Ceramic School. Mar del Plata City. Argentina.



陶瓷作品即是材料的制作过程。内力组合是由一个旋转的动作系统形成，作用于一个给定的材料形成独特的形状和纹理。然后用火烧制完成作品。

Ceramics are materials and processes. The action of an internal force combined by a rotation system, acting on a given material results in a unique shape and texture. Then the fire will finish the work.

Coriolis Effect Efecto Coriolis

