



Hasan Numan
SUÇAĞLAR | **ARTISTIC
CERAMICS**



Hasan Numan
SUÇAĞLAR | **ARTISTIC
CERAMICS**

ARTIST STATEMENT

Within the city we know and see every day, when we start to question and compare places and cities; we want to keep our insufficiency under pressure with the illusion we are wrong. With the creative impulse brought on by the oppression, we are moving in the mutual problematic of what we see and what we think. We create new narratives in order to gain awareness by creating new thoughts while the city is regularly or irregularly changing our landscape thoughts.

The ghetto neighborhoods of ancient cities are to the suburbs, It seems inevitable that a new city memory will be created as the suburbs become the kitchy luxurious neighborhoods of today. Suçağlar, try to relate the possibilities of colors, plans and materials in their forms to vision and thinking, and He creates critical works on the newly formed city memory.

It is the integration and interpretation of the artist in the urban memory, seen in the urban perception. Sharing with the audience also shapes the vision and thinking through another point of view. Finally, to think a bit more on what we see. With plastic touches, it stands out.

Cities are real and we live in...

ABOUT ARTIST

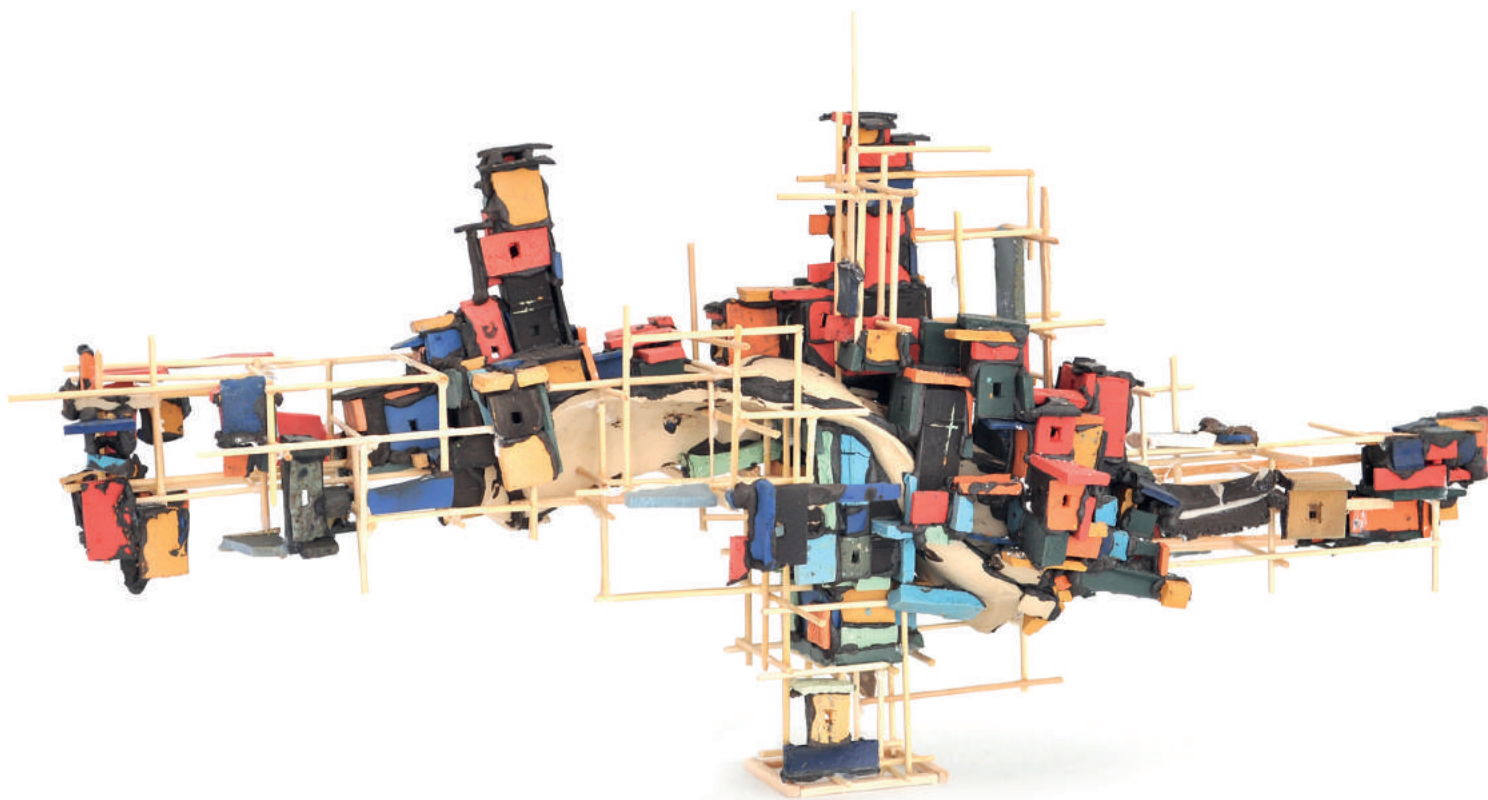


SUCAGLAR, HASAN NUMAN

He was born in TURKEY in 1987. He was graduated from the Canakkale Onsekiz Mart University Ceramic Department in 2010. He completed his Master's degree in Ceramic Department at University of Canakkale Onsekiz Mart in 2013. He started in 2014 at the Hacettepe University Ceramic Department is continuing Proficiency in Arts education program. Currently, He continues to work as a Research Assistant in Hacettepe University; Department of Ceramics. He has opened 2 solo exhibitions in Turkey and 1 solo exhibition abroad. Until now, he has received 3 awards from various ceramic competitions. He has participated in more than 50 exhibition. He continues to join the domestic and international symposiums and workshops firmly.



Triyana Park West,
28x10x10, Electric Kiln, 1300 C, Mixed - Media, 2017



Quarter,
60x29x18 cm, Electric Kiln, 1300 C, Mixed - Media, 2017



Sugla Heights,
30x11x10 cm., Electric Kiln, 1300 C, Mixed - Media, 2017



Gladshimr,
30x28x15 cm., Wood Fire, 1300 C, Mixed - Media, 2016



Vingolf,
33x15x13 cm., Wood Fire, 1300 C, Mixed - Media, 2016



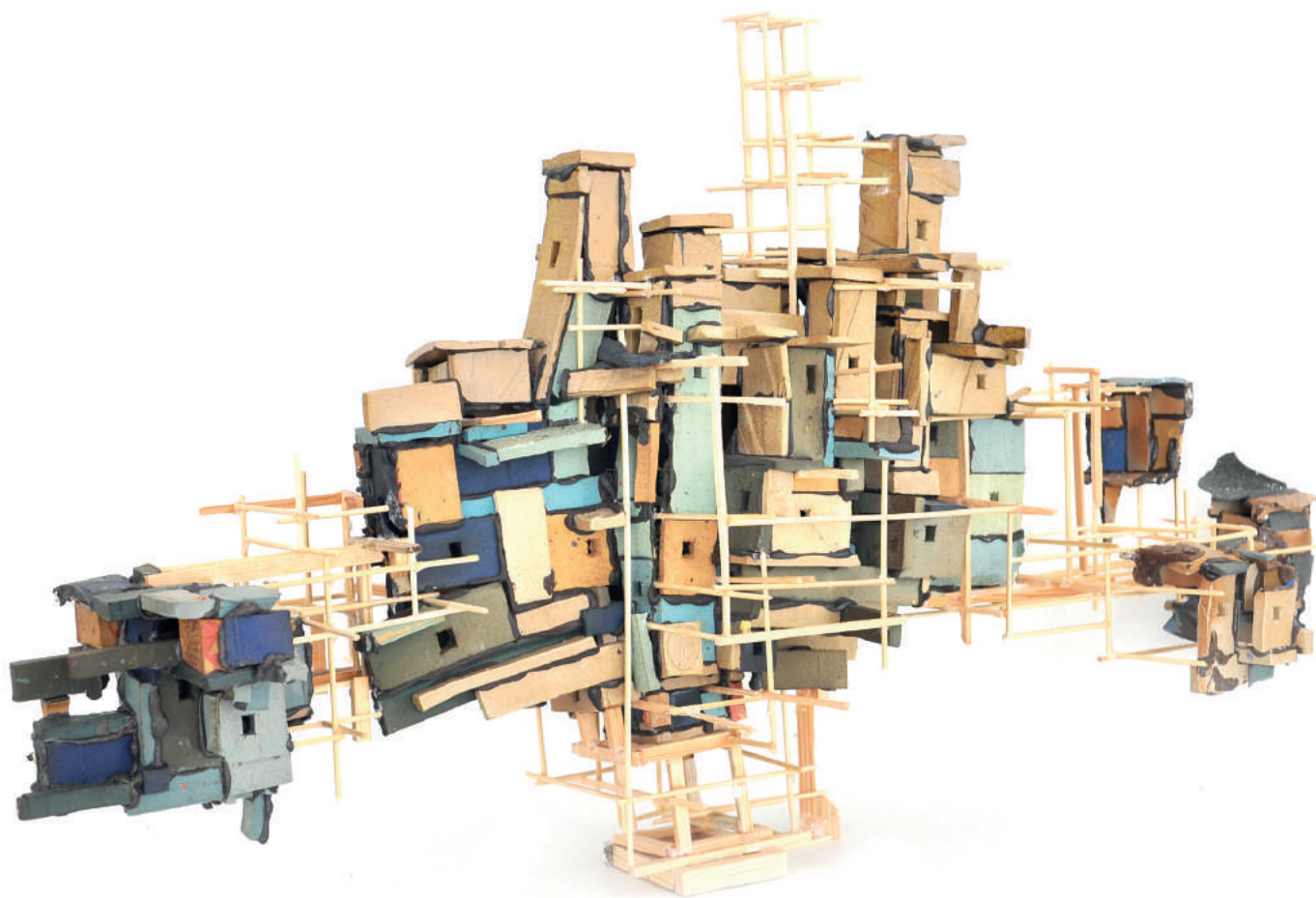
Part of City on The Wall,
36x20 cm., Wood Fire, 1300 C, Mixed - Media, Wall Panel, 2017



Majestic Pendika Pevun,
38x13x10 cm., Electric Kiln, 1300 C, Mixed - Media, 2017



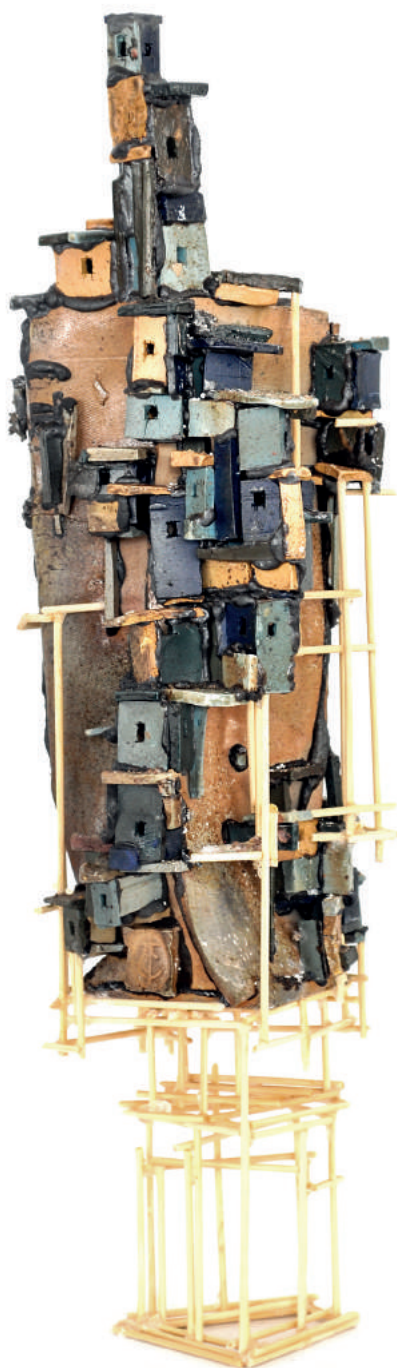
Hlidskjalf,
39x20x13 cm., Wood Fire, 1300 C, Mixed - Media, 2016



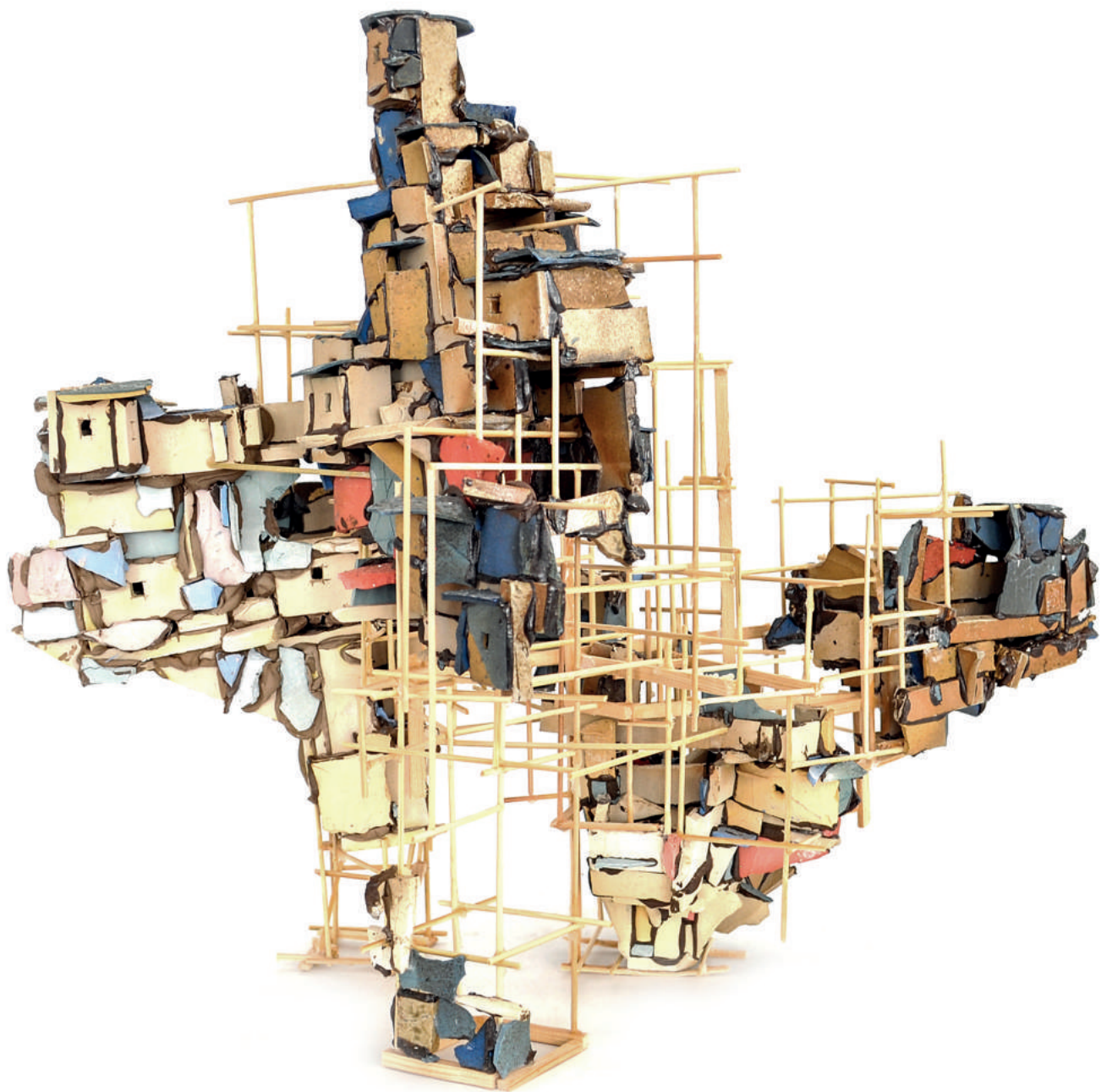
District,
70x40x20 cm., Wood Fire, 1300 C, Mixed - Media, 2017



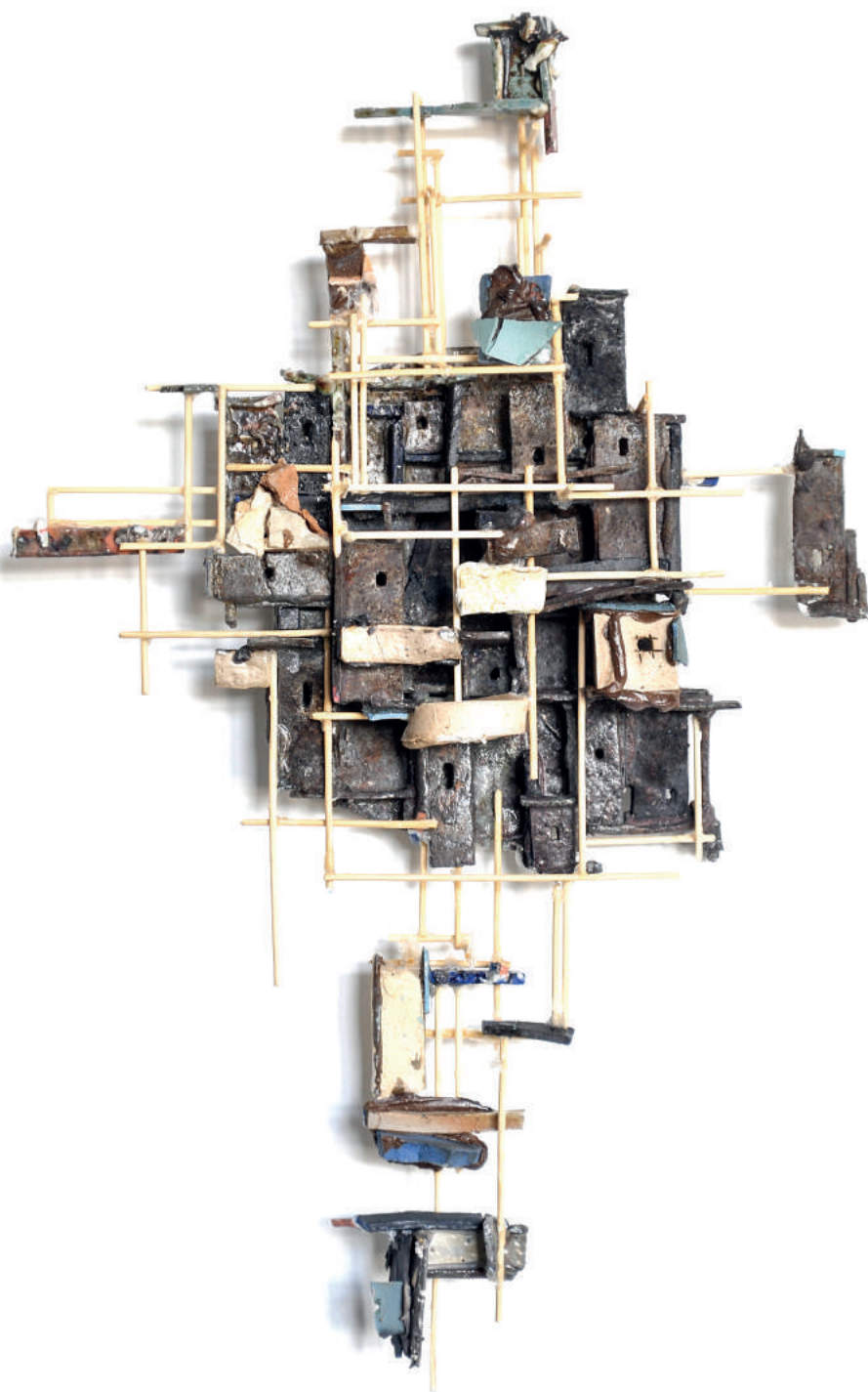
Vanaheimr,
41x20x13 cm., Wood Fire, 1300 C, Mixed - Media, 2016



Tatavla Mahogany,
43x13x10cm., Wood Fire, 1300 C, Mixed - Media, 2017



Rookery,
45x50x30cm., Wood Fire, 1300 C, Mixed - Media, 2017



Part of City on The Wall,
46x30 cm., Wood Fire, 1300 C, Mixed - Media, Wall Panel, 2017



Part of City on The Wall,
52x15 cm., Wood Fire, 1300 C, Mixed - Media, Wall Panel, 2017



Necropolis II,
55x15x11cm., Wood Fire, 1300 C, Mixed - Media, 2016



Xromidio I,
68x18x20 cm., Wood Fire, 1300 C, Mixed - Media, 2016



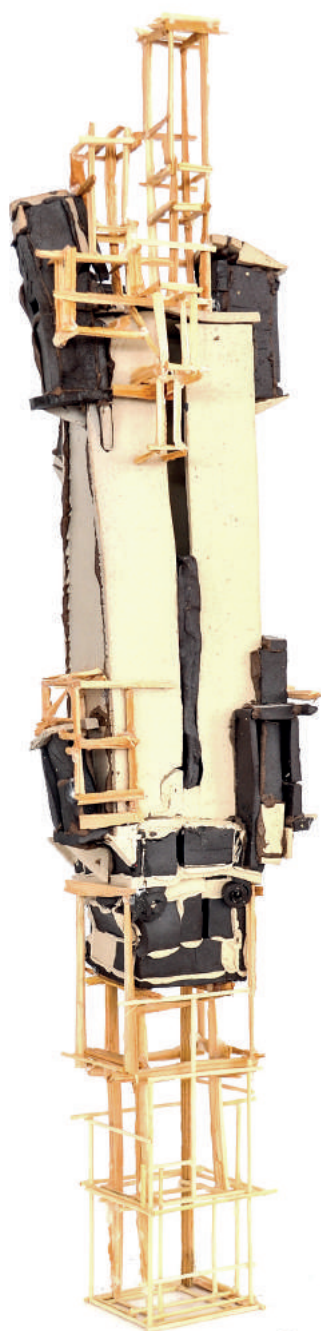
Ruin,
61x15x15 cm., Wood Fire, 1300 C, Mixed - Media, 2016



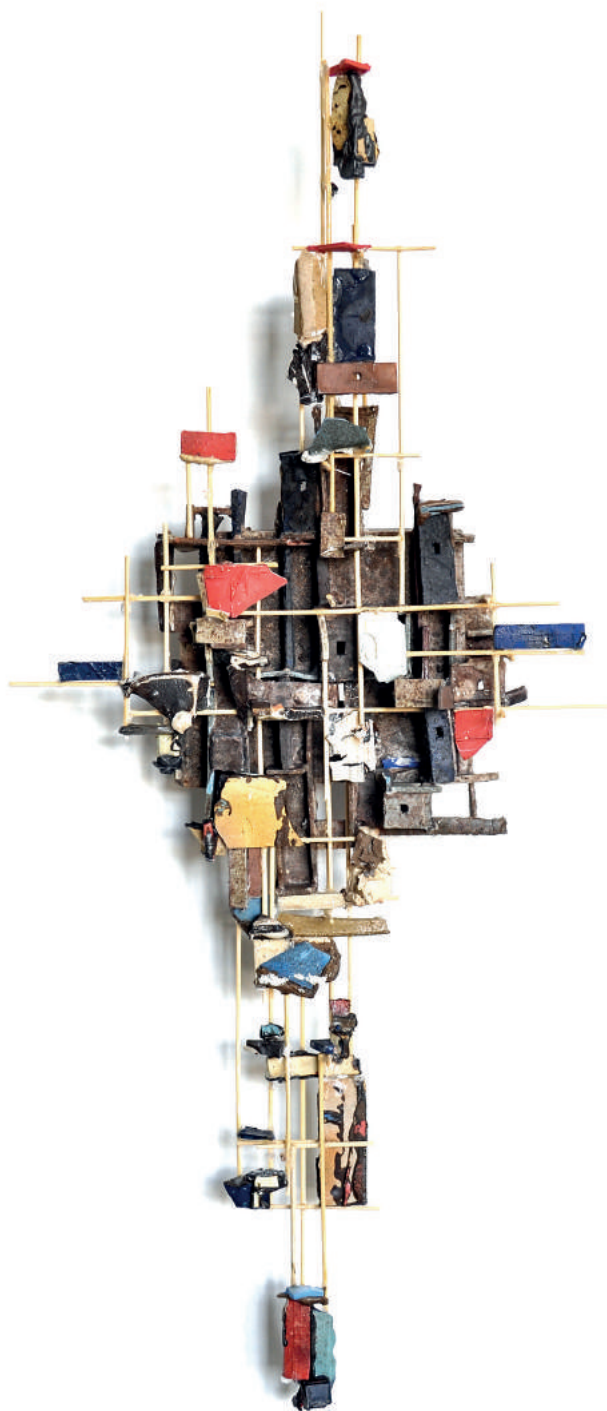
A Piece of Nidavellir,
70x20x20 cm, Wood Fire, 1300 C, Mixed - Media, 2016



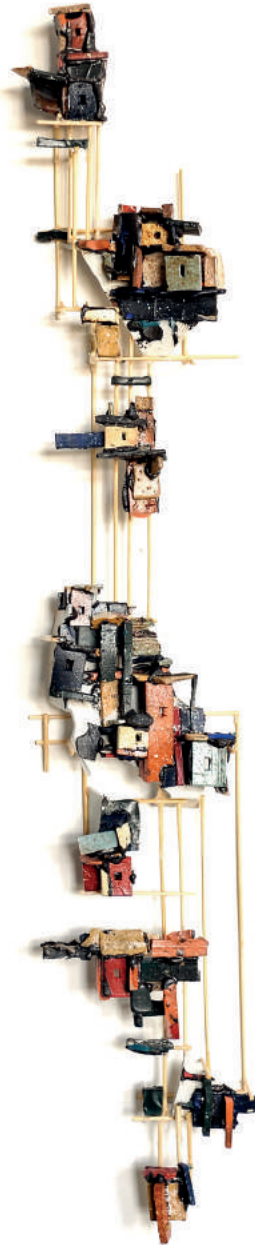
Pyrgos III,
70x23x12 cm, Wood - Fire, 1300 C, Mixed - Media, 2017



Modern or Not?,
71x16x14 cm, Wood Fire, 1300 C, Mixed -Media, 2017



Part of City on The Wall,
75x30 cm., Wood Fire, 1300 C, Mixed - Media, Wall Panel, 2017



Part of City on The Wall,
77x15 cm, Wood Fire, 1300 C, Mixed - Media, Wall Panel, 2017



Nidavellir,
78x15x15 cm, Wood Fire, 1300 C, Mixed -Media, 2016







Hns
Ceramics

Hasan Numan
SUÇAĞLAR

Ceramic Artist



numansucaglar@gmail.com

hns.ceramics@gmail.com



+90 530 866 17 42



hns_ceramics



numan.sucaglar



hns ceramics

