

## Luoyang Sancai Art Museum

The Luoyang Sancai Art Museum, a national second-level museum, is a comprehensive art museum that integrates four specialized sections: the Comprehensive Exhibition Hall (Luoyang Sancai Intangible Cultural Heritage Hall), the Craft Exhibition Hall (China Sancai Cultural and Creative Park), the Historical Exhibition Hall (China Sancai Art Museum), and the Study and Tourism Base (Luoyang Sancai Pottery Village). These sections are located in Yibin District, Laocheng District, Luolong District, and Luoning County of Luoyang City, from east to west. The museum was dedicatedly established by Guo Aihe, a member of the 14th National People's Congress and a master of Chinese arts and crafts, as a thematic museum for the inheritance and innovation of Luoyang Sancai art.

Luoyang Sancai is a gem of Chinese history and culture, embodying the accumulated experience, techniques, and aesthetic concepts from the long development of Chinese ceramic culture. The evolution of history and culture has continuously elevated the art of Sancai. The Luoyang Sancai Art Museum, based on Director Guo Aihe's theory that 'Luoyang Sancai '(adding' Luoyang 'before' Sancai 'clearly indicates that Luoyang is the geographical origin of Sancai, encompassing' Tang Dynasty Sancai 'and other forms of Sancai art,

reflecting the historical evolution of the Sancai art system), integrates various functions such as artistic research, creation, exhibitions, social education, and cultural exchange. Since its opening, the museum has been honored with titles such as the Practice Innovation Base for the United Front Work of New Social Strata by the Central United Front Work Department, the Gold Award Unit of the National Youth Volunteer Service Competition, and the Research and Study Base of the China Arts and Crafts Society. It stands as the most prominent card in Luoyang's efforts to become a museum capital.

#### Luoyang Sancai Art Museum (Comprehensive Exhibition Hall)

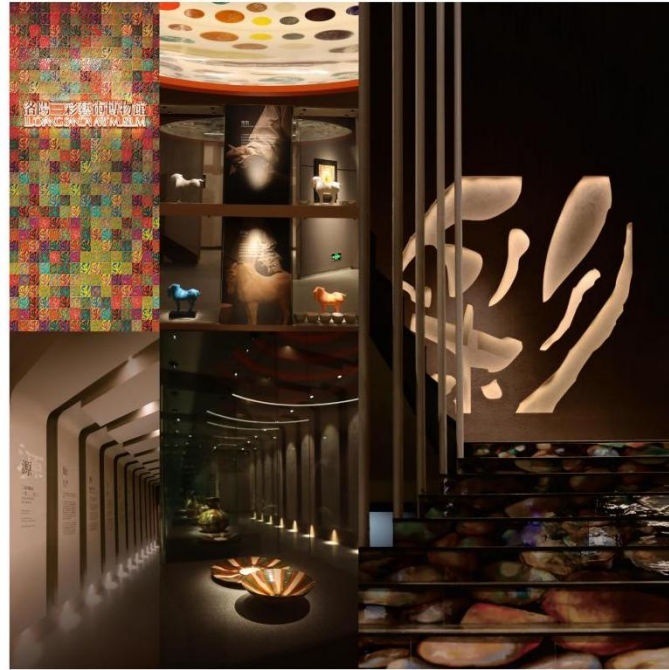
#### Luoyang Sancai Intangible Cultural Heritage Museum

Luoyang Sancai Intangible Cultural Heritage Museum is a comprehensive exhibition hall of Luoyang Sancai Art Museum. It is a cultural industry demonstration base in Henan Province. Located in Lijingmen Historical and Cultural Block in the old city of Luoyang, it is a comprehensive presentation of the inheritance and innovation of Luoyang Sancai art intangible cultural heritage.

#### The Luoyang Sancai Intangible Cultural Heritage Museum

comprises the Luoyang Sancai Center Exhibition Hall, the Luoyang Sancai Works Exhibition Hall, the Luoyang Sancai Cultural and Creative Pavilion, and the Luoyang Sancai Temporary Exhibition Hall. The Luoyang Sancai Center Exhibition Hall presents a comprehensive overview of the history and present of Luoyang Sancai through sections such as 'Luoyang in the Sky,' 'Tracing the Origin of Sancai,' 'Inheriting Sancai,' 'Sancai Glazes,' 'Sancai Kiln Firing,' 'Discovering Sancai,' 'Defining Sancai,' 'Today's Sancai,' 'Sancai Techniques,' 'Sancai Kiln Changes,' 'Sancai Glaze Paintings,' 'Sancai Pottery Sculptures,' 'Sancai Branches,' 'Sancai Art Records,' 'Sancai Environmental Art,' 'Sancai Masters,' 'Sancai Research,' and 'Farewell to Sancai.' The Luoyang Sancai Works Exhibition Hall innovatively interprets the 'Luoyang Sancai' intangible cultural heritage through the artistic creations of contemporary masters, aiming to enhance public understanding and appreciation of this cultural heritage and to infuse Chinese traditional culture with innovation and vitality in the modern era.

Move forward and turn for a thousand years, and look at the glaze flowing with thousands of colors.







## Luoyang Sancai Art Museum (Historical Exhibition Hall)

### China Sancai Art Museum

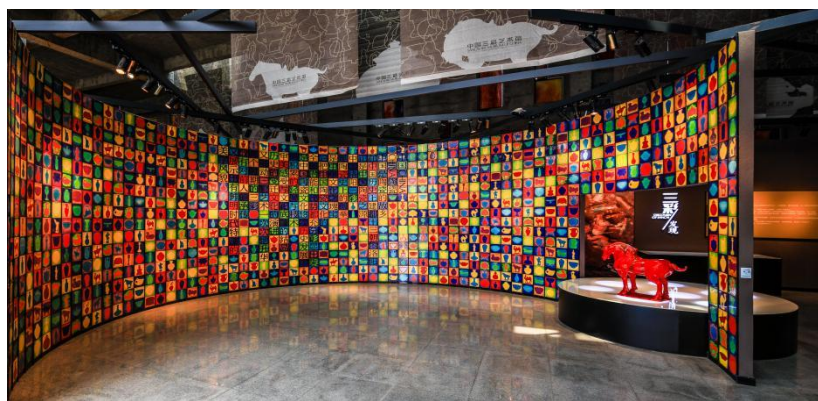
The China Sancai Art Museum is the historical exhibition hall of Luoyang Sancai Art Museum, a mass creation space in Henan Province, and a traditional culture education base for primary and middle school students in Luoyang City. Located in Luoyang Normal University in Yibin District of Luoyang City, the China Sancai Art Research Institute and the Sancai Forum are rooted here, and it is a research center for the development process of "Luoyang



Sancai".

The China Sancai Art Museum features a unidirectional layout, comprising sections such as the Sancai Preface Hall, Luoyang in the Sky, Sancai Discovery, Sancai Origin, Sancai Inheritance, Sancai Spread, Sancai Cinema, Today's Sancai, Sancai Light, Master Exhibition Hall, Sancai Maker, Sancai Book Bar, and Service Center. The museum makes full use of multimedia design for its exhibitions, focusing on the collections of Luoyang Sancai from different periods. This approach allows visitors to gain a comprehensive and fresh understanding of Chinese Luoyang Sancai in a short time: each period's Sancai artworks not only carry forward the legacy of predecessors but also showcase distinct aesthetic features of their respective eras.

The Chinese Sancai Art Museum, with its dazzling light, shines through the ages.



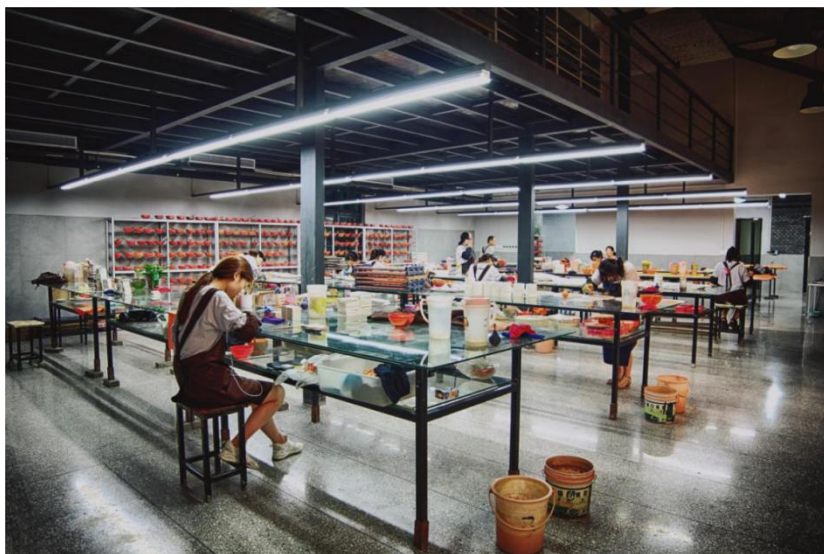


## Luoyang Sancai Art Museum (Art Gallery) China Sancai Cultural and Creative Park

The China Sancai Cultural and Creative Park, a national-level experimental zone for the ecological protection of Heluo culture, is home to the Luoyang Sancai Art Museum's craft exhibition hall. The park also houses the Aihe Art Museum. Situated on Anle Junmin Road in Luolong District, Luoyang City, the park covers an area of over 20,000 square meters and serves as a base for the National Art Fund's Sancai Art Innovation Talent Training and Creation Program.

The China Sancai Cultural and Creative Park is a comprehensive Sancai cultural park that integrates Sancai creative design, production, craft display, and educational exchanges. It is the birthplace of the 'Sancai Art' brand. The park's creative team comprises several national and provincial-level masters of arts and crafts, along with over a hundred artisans. Their works include Sancai glaze paintings, Sancai pottery sculptures, and Sancai ring art. The President of the International Ceramics Association, UNESCO, has hailed Sancai Art as the world's most vibrant ceramics, and the park has earned widespread acclaim for its collection of timeless masterpieces.

Inherit the thousand-year-old kiln fire and recreate the legend of Sancai.



Luoyang Sancai Art Museum (study base) Luoyang Sancai pottery village

Luoyang Sancai Pottery Art Village is a study base of Luoyang Sancai Art Museum, an international art exchange workshop and a national 3A-level tourist attraction. Located in Huashuwa, Luoling Township, Luoning County, Luoyang City, it covers an area of more than 3,000 mu and is a Chinese rural art park created by Sancai pottery art creativity.

Luoyang Sancai Pottery Village, also known as Aihe Town, centers on the interpretation of the 'World Beyond Pottery' and the 'Four Seasons Painting Valley.' The earth-based ceramic installations 'Rong,' 'Transmission,' 'YU,' 'Great Beauty Without Frame,' and 'Five-Hole Kiln' harmonize with the seasonal mountain flowers, aligning with the concepts of Sancai Valley and Luo Shuyuan. The renovation of Huashuwa's rural residence and the establishment of the Day Art Museum adhere to the principle of sustainability, using local materials and blending seamlessly with nature. The most anticipated permanent exhibition of China's 'Day' art is located here,

where art empowers and aesthetic education in the countryside is flourishing.

Walking through the mountains and valleys, cypress trees are in full bloom, flowers cover the slopes, art flows into the streams, and love is like the sea.

Love and town, a town with love and you.





