

look. Loss of riparian areas means the scenery on many riverways now is miles and miles of corn, some of it falling into the river as the riverbanks erode. That summer, the state warned dog owners to keep their pets from swimming near cyanobacteria, or blue-green algae, because polluted water can and does kill. But in places, protectors have worked to conserve the riverways, and this section of the Boone River is one such stretch of river.

We passed through woodlands and over some rock riffles, observed the slicked trails of otter slides down the riverbanks, and heard the plops of the turtles we startled into leaving their sunning spots. Cliff sparrows flew in and out of their nests along the rock faces. What stays with me, though, is the feeling of the eagle flying low overhead. She followed us for quite a long while downstream, sometimes flying so low that we placed our hands on our hats. She waited for us as we took a snack break on a sandbar and stuck with us as made our way around the horseshoe bend, where her nest loomed above in a half-dead tree and from which she could watch us continue on.

The current state of the Missouri and Mississippi rivers and their tributaries tells us all we need to know about the consequences of past decisions in our state. We all know that externalizing the costs of the state's agricultural production to all downstream is not sustainable; that the health of our neighbors, be they the otters or the generations downstream, depend upon us taking actions now.

Each of these actions is another stone placed in the course of our trajectory, an effort to redirect our current course toward a future in which all Iowans have the benefit of clean water and air, healthy soil, and vibrant communities. We must rethink how we relate to one another, to the places and people we know as home. It's not only the leadership of more diverse perspectives that we need, but also new conceptualizations of what it means to be a human in this time and in this place.



Details of *Ice Dreams: Blue Dream* and *Red Dream*, 2020 by Ingrid Lilligren. Ceramic, wood, ice, unfired clay, sheet metal. On loan from the artist.

by Lisa Held, February 14, 2018 civileats.com/2018/02/14/can-the-leopold-center-be-saved

Inside Climate News, "IPCC Report Shows Food System Overhaul Needed to Save the Planet" by Georgina Gustin, August 8, 2019 insideclimatenews.org/news/08082019/ipcc-agriculture-report-food-system-overhaul-climate-change-deforestation

GRAIN, "Step Aside Agribusiness, It's Time for Real Solutions to the Climate Crisis" September 25, 2019 grain.org/en/article/6330-step-aside-agribusiness-it-s-time-for-real-solutions-to-the-climate-crisis

Institute for Agriculture and Trade Policy, "A False Solution: Why Carbon Markets Don't Work for Agriculture" by Tara Ritter, February 5, 2020 iatp.org/blog/202002/false-solution-why-carbon-markets-dont-work-agriculture

The Des Moines Register, "Coronavirus Infects More Than 1,600 Workers at Four Iowa Meatpacking Plants" by Tony Leys, May 5, 2020 desmoinesregister.com/story/news/health/2020/05/05/coronavirus-infects-thousands-iowa-meatpacking-plant-workers-covid-19-waterloo-perry/5170796002

The Des Moines Register, "Iowa's Water Quality Strategy Is Not Working" by Neil Hamilton, Matt Liebman, Silvia Secchi, and Chris Jones, February 7, 2020 desmoinesregister.com/story/opinion/columnists/iowa-view/2020/02/07/iowa-water-quality-new-strategy-needed/4546560002

Civil Eats, "Tom Philpott Predicts the End of Farming as We Know It" by Twilight Greenaway, August 27, 2020 civileats.com/2020/08/27/tom-philpott-predicts-the-end-of-farming-as-we-know-it

Meskwaki Food Sovereignty Initiative
meskwaki.org/community-services/mfsi

Schumacher Center for a New Economics
centerforneweconomics.org

Humble Hands Harvest
humblehandsharvest.com

Sustainable Iowa Land Trust (SILT) silt.org

National Family Farm Coalition, "Let's Make Parity Our National Policy" by George Naylor, November 9, 2016 nffc.net/lets-make-parity-our-national-policy

International Planning Committee for Food Sovereignty
foodsovereignty.org/the-ipc

Declaration of Nyéléni 2007
<https://nyeleni.org/IMG/pdf/DeclNyeleni-en.pdf>



Adaptation Series 7, 2020

by Ingrid Lilligren

Ceramic with oil, air, water, soil, DNA, blood, salt, corn and gold

On loan from the artist.



Ice Dreams: Blue Dream, 2020

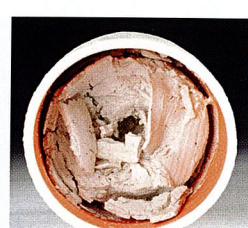
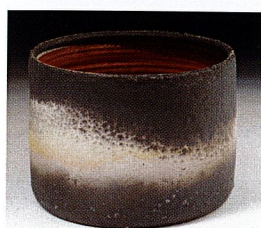
Ingrid Lilligren

Ceramic, wood, ice, unfired clay,
sheet metal
On loan from the artist.

Ice Dreams: Red Dream, 2020

Ingrid Lilligren

Ceramic, wood, ice, unfired clay,
sheet metal
On loan from the artist.



Adaptation Series 1 – 7, 2020

Ingrid Lilligren

Ceramic with oil, air, water, soil, DNA, blood, salt, corn
and gold
On loan from the artist.

