



Mari Emori
Portal I
Ceramics
Berkeley, CA



Mari Emori
Portal 2
Ceramics
Berkeley, CA

BERKELEY TIMES

berkeleyx.org a paper for the people of Berkeley

Images courtesy of the artists



Just in time for the holidays! – Beginning this weekend, the gallery within Berkeley Potters Guild, this community's more tenured artist co-op (50 years and counting), will be open to holiday shoppers. The ceramic creations of at least 17 guild members will be on display, including: *Silent Plea 2* by Mari Emori (cover image) and a modeled vase in *Apache Green* by John Stephenson (lower right). To see more representative works by Guild members, turn to page 14.

Open Gallery @ Berkeley Potters Guild – Saturday/Sunday

BY R. TODD KERR

Suddenly, it's the season for gifting – a time of year some of us take seriously, perhaps too seriously. Just the same, the art of gifting in Berkeley is a talent to be hewn and developed over time. Now that Tail of the Yak is no longer operational – that wonderful emporium of creativity and gift-giving cleverness in the Elmwood that shut on June 30 – it's time to

seek inspiration in other art spaces.

The good news is that East Bay Open Studios (eastbayopenstudios.com) begins this weekend – Saturday, Dec. 2 & Sunday, Dec. 3 – just in time for the gifting season. This year, more than 100 local artists are participating, including 70+ here in Berkeley. Typically, studio hours are 11 a.m. – 5 p.m., but times may vary

depending on the artist and/or art space, so check the website before heading out.

Among the art spaces participating this year's Open Studios is Berkeley Potters Guild, located at 731 Jones St. (close to Fourth St.), a renovated warehouse that currently accommodates 19 private

see page 14



INSIDE

11TH HOLIDAY FUND	2	BHS JAZZ CUBA TRIP	7	ARTS & ENTERTAINMENT	12
CITY NEWS	3	TRIBUTES TO JENNIFER CURTIS	8-10	ARTS CALENDAR	13
BERKELEY BLUE	5	PARENTING	10	THE POTTERS' GUILD	14
COMMUNITY CALENDAR	6	FEATURES	11	POEM & DEDICATION	16

Off Center: An International Ceramic Art Competition

By [Blue Line Arts](#) | March 29, 2023



About the Exhibition

Off Center is Blue Line Arts' annual ceramic art competition, juried each year from entries from across the nation and abroad. Ranging from functional studio pottery to mixed media installations, works in this show offer a vibrant cross section of contemporary clay in a variety of styles.

Cash prize awards will be announced at the reception on April 15th.

About the Juror

Writer, curator, and educator Garth Johnson is the Paul Phillips and Sharon Sullivan Curator of Ceramics at the Everson Museum of Art in Syracuse, New York. Johnson is a self-described craft activist who explores craft’s influence and relevance in the 21st century. His recent exhibitions at the Everson include *Renegades & Reformers: American Art Pottery*, *Earth Piece: Conceptual and Performative Works in Clay* and *Key Figures: Representational Ceramics 1932-1972*.



Juror's Statement

“As someone who is surrounded by the greatest works in the history of studio pottery at the Everson Museum in Syracuse, I’m astounded by the energy that is driving the field today. Community studios are having a hard time meeting the demands of a public that is increasingly turning to ceramics for solace and to transform their environments. The resulting show, *Off Center*, is truly that. It’s full of work that makes me curious and excited about what is to come.”

Participating Artists

Anthony Maki Gill
Barbara Hoffman
Brandi Cooper
Charles Stewart
Christine Golden
Dan Molyneux
Dani Jeffries
Daryn Lowman
Debra Mezaros
Dyan Akkouche
Freddy Santana
Greta Ruiz
Heather Cornelius

Heather Kaplan
Ianna Frisby
J. Casey Doyle
Jan Schachter
Jason Edmonds
Jeffrey Michael
Jennifer Lim
Jill Foote-Hutton
John Gargano
Joy Okokon
Karen Fulk
Lucien Koonce
Maggie Gao-Gehlmann

Mari Emori
Mario Munguia
Maru Hoeber
Mary Catherine Bassett
Matthew Skelly
Michele Collier
Muna Halabi
Pancho Jimenez
Shannon Blakey
Tina Gebhart
Vince Montague
Vincent Burke
Wendy Kusmaul Keeling



Dynamo – Mari Emori

\$1,800.00

Out of stock

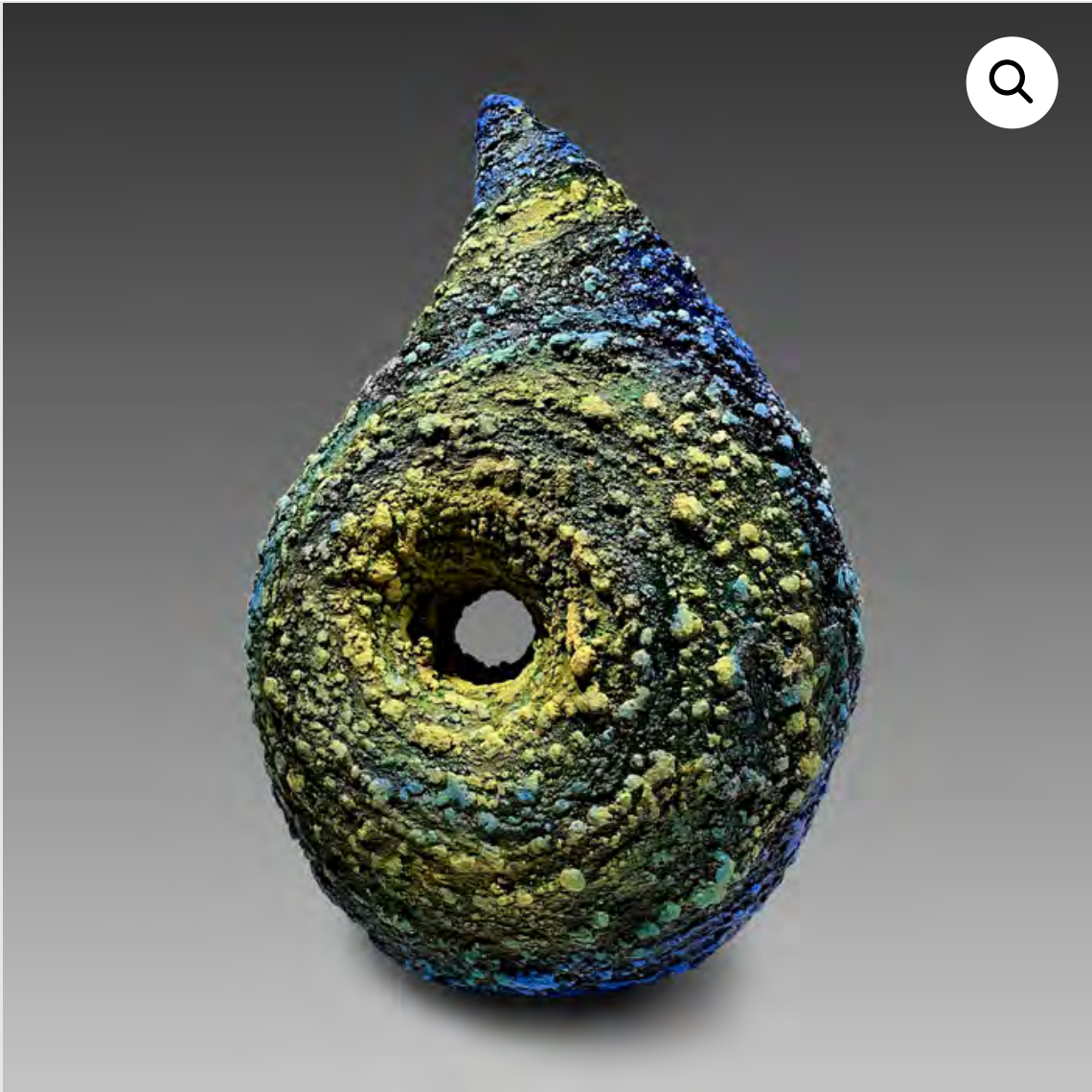
Description

Additional information

Description

Ceramic

SKU: **Mari Emori-Dynamo** Category: **Off Center 2023**



Celestial – Mari Emori

\$1,800.00

Out of stock

Description	Additional information
<div><h2>Description</h2><p>Ceramic</p></div>	



Member: Mari Emori

iCAN International
CERAMIC
ARTISTS
NETWORK

April 2023

March 2023						
S	M	T	W	T	F	S
			1	2	3	4
5	6	7	8	9	10	11
12	13	14	15	16	17	18
19	20	21	22	23	24	25
26	27	28	29	30	31	

May 2023						
S	M	T	W	T	F	S
	1	2	3	4	5	6
7	8	9	10	11	12	13
14	15	16	17	18	19	20
21	22	23	24	25	26	27
28	29	30	31			

Sun

26

Mon

27

Tue

28 1st Quarter

Wed

29

Thu

30

Fri

31


Sat

1



OFF CENTER —————

————— AN INTERNATIONAL CERAMIC COMPETITION

blue | line arts 



Mari Emori
Portal I
Ceramic
San Francisco, California



Mari Emori
Portal II
Ceramic
San Francisco, California

Sculpture COLLECTION



2022
iCAN
CALENDAR

Mari Emori



Member: Mari Emori

iCAN International
CERAMIC
ARTISTS
NETWORK

July 2020

June 2020						
S	M	T	W	T	F	S
	1	2	3	4	5	6
7	8	9	10	11	12	13
14	15	16	17	18	19	20
21	22	23	24	25	26	27
28	29	30				

August 2020						
S	M	T	W	T	F	S
						1
2	3	4	5	6	7	8
9	10	11	12	13	14	15
16	17	18	19	20	21	22
23	24	25	26	27	28	29
30	31					

Sun

Mon

Tue

Wed

Thu

Fri

Sat

ceramics

M O N T H L Y



7 25274 97090 2 10
Oct 2019 \$7.50 (Can\$9.50)

exposure



1



2



3



4



5



6



7

1 Farraday Newsome's *Lively Bowl with Oranges*, 14 in. (36 cm) in diameter, terra cotta, fired in an electric kiln, 2019. 2 Virginia Scotchie's *Pollination*, 15 in. (38 cm) in height, stoneware, 2019. 3 Marty Fielding's bottle, 16 in. (41 cm) in height, handbuilt red stoneware, fired in an electric kiln to cone 4, 2018. 4 Ken Baskin's *Crucibles Series #20*, 22 in. (56 cm) in length, soda-fired stoneware, 2017. 5 Nancy Sowder's turquoise tray, 11 in. (28 cm) in diameter, mid-wheel-thrown stoneware, fired to cone 10 in reduction, 2017. 6 Chiho Tokita's *Intimations Form #1*, 17 in. (43 cm) in width, porcelain, glaze, fired in an electric kiln, paint, 2018. 7 Mari Emori's *Circle Series: Red & Black Metallic*, 16 in. (41 cm) in diameter, handbuilt and Lorton, Virginia, through October 13. "Workhouse Clay International 2019," at Workhouse Arts Center (www.workhousearts.org) in

Ceramic

International
Ceramic Arts
Exchange Week



第五届宏光紫气国际陶艺交流周

自然与器

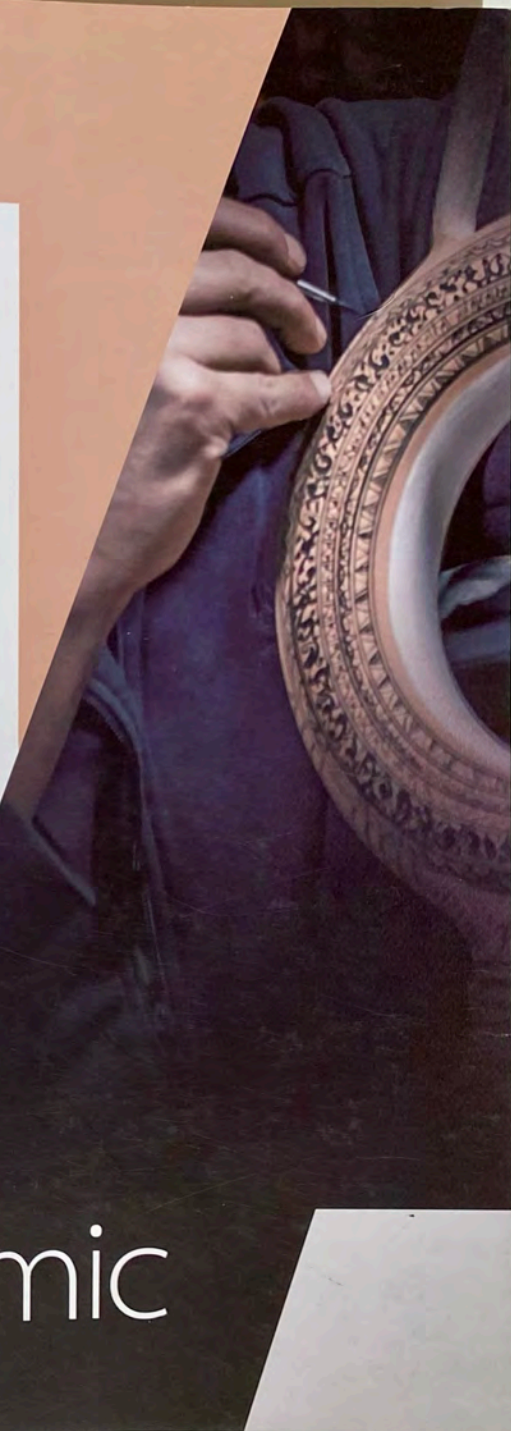
2019.10

宏光紫气国际陶艺交流周

5th

Fifth
Hongguang Ziqi
International
Ceramic
Arts
Exchange
Week

Ceramic





玛丽·爱茉莉
Mari Emori

玛丽在日本高冈出生长大，1989 年搬到旧金山湾区。2012 年获得了马萨诸塞艺术与设计学院平面设计荣誉学士学位。30 多年前开始了她作为艺术家和设计师的旅程，当时她在日本用一种抗蜡纺织染色技术在丝绸上制作和服，用于制作复杂而美丽的图案。移居美国后她探索了不同的媒介和职业道路，不久前，她的创作精神终于在陶瓷艺术中找到了真正的归宿。

Mari was born and raised in Takaoka, Japan, and moved to the San Francisco Bay Area in 1989. She received her BFA with honors in Graphic Design from Massachusetts College of Art and Design in 2012. Mari began her journey as an artist and designer more than 30 years ago when she made kimonos in Kyoto, Japan using rōketsu-zome, a wax-resist textile dyeing technique, on silk for the intricate and beautiful designs. After moving to the US, she explored different mediums and career paths including floral design in the '90s and progressing to interior design and graphic design during the past decade. It wasn't long ago that her creative spirit finally found its true home in ceramic art. Each area of design that Mari had explored has helped her to hone the discipline and skills that she now uses to create artworks in clay.



茶壶和茶杯 Teapot & Cups



命运 Fate



Member: Mari Emori
Circle Series-Red

September 2019

S	M	T	W	T	F	S
1	2	3	4	5	6	7
8	9	10	11	12	13	14
15	16	17	18	19	20	21
22	23	24	25	26	27	28
29	30					

October 2019

November 2019

S	M	T	W	T	F	S
						1
3	4	5	6	7	8	9
10	11	12	13	14	15	16
17	18	19	20	21	22	23
24	25	26	27	28	29	30

Sun

Mon

Tue

Wed

Thu

Fri

Sat



Member: Mari Emori
Homage to the Pima 2

September 2018

S	M	T	W	T	F	S
						1
2	3	4	5	6	7	8
9	10	11	12	13	14	15
16	17	18	19	20	21	22
23	24	25	26	27	28	29
30						

October 2018

November 2018

S	M	T	W	T	F	S
						1
						2
4	5	6	7	8	9	10
11	12	13	14	15	16	17
18	19	20	21	22	23	24
25	26	27	28	29	30	

Sun

Mon

Tue

Wed

Thu

Fri

Sat