

News

Swire Hotels gives sneak peek of The Middle House

12 Jan 2018 by Craig Bright



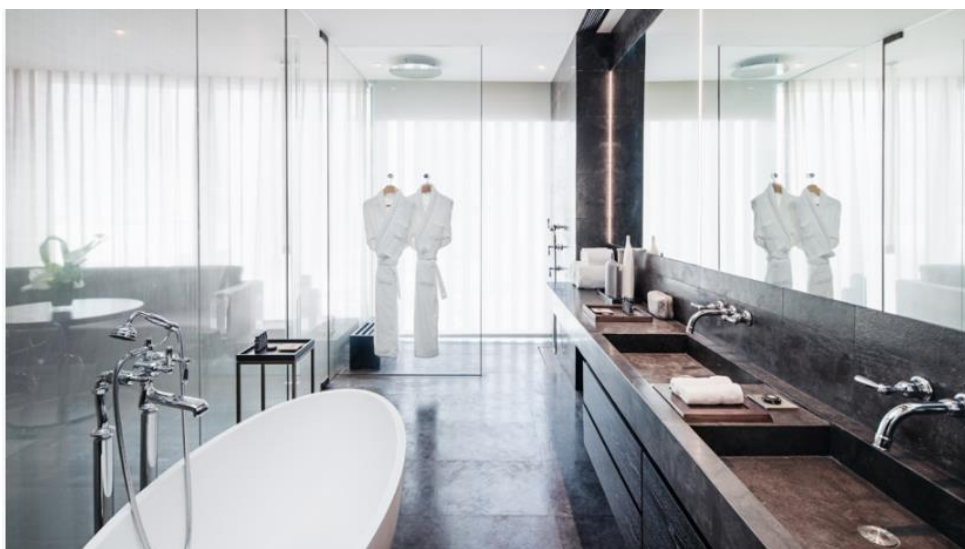
Swire Hotels has unveiled a sneak preview of its upcoming The Middle House property in Shanghai, the group's fourth hotel in its "The House Collective" that also includes The Opposite House in Beijing, The Upper House in Hong Kong, and The Temple House in Chengdu.

The hotel forms part of the new HKRI Taikoo Hui mixed-use development alongside the world's second Sukhothai Hotels and Resorts property, located on Nanjing Road (West) in the city's commercial district.

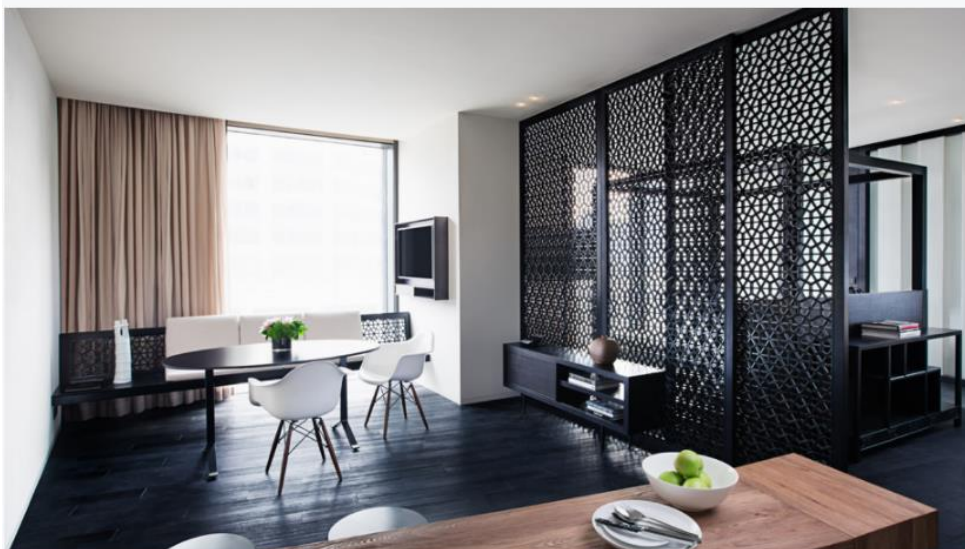
Italian architect, Lissoni Piero, is behind the design of the hotel, which features an interior created around classical Shanghaiese styles along with a minimalist aesthetic. The exterior, meanwhile, features large round aluminium louvres, or angled slats, intended to provide privacy for the guestrooms along with giving the tower its distinctive aesthetic.



The Middle House, Shanghai - Hotel room 2



The Middle House, Shanghai - Hotel room 3



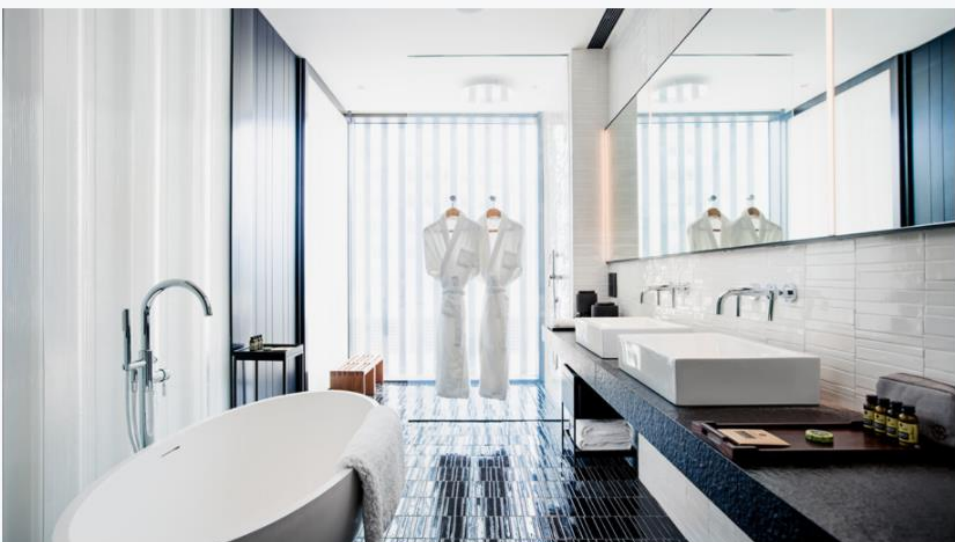
The Middle House, Shanghai - Residence 1



The Middle House, Shanghai - Residence 2



The Middle House, Shanghai - Residence 3



The Middle House, Shanghai - Residence 4



The Middle House, Shanghai - Studio 70

The Middle House will have 111 rooms, along with 102 serviced apartments under The Middle House Residences. Outdoor spaces are also set to be a notable focus of the hotel, while a number of familiar The House Collective offerings, such as Café Gray Deluxe, will be available.

Originally due to open at the end of last year, The Middle House has since been given an opening date of April 2018, though a specific day has not been confirmed.

swirehotels.com

Tags: Shanghai, Swire Hotels