

Tao of Fusion

融合之“道”

WAN LIYA'S CERAMIC

万里雅陶瓷作品



1980年代 四年海员工作
第一次环球航行
横渡太平洋

Seaman job for four years during 1980s
The first voyage round the world
Crossing Pacific Ocean 1984



《国宝》 陶瓷, 金属, 建筑膜, 大理石 2235X235X462cm 2011《海牙天下》中国当代雕塑展 荷兰海牙
A NATIONAL TREASURE porcelain, steel, construction film, marble 2235X235X462cm
THE HAGUE UNDER THE HAVEN Chinese Contemporary Sculpture Exhibition in Holland 2011



清 雍正粉彩蝠桃橄欖瓶 原件（現陈列于上海博物馆）
The original piece of the royal kiln porcelain from Yongzheng
Period of Qing



张永珍和奥格登 里德在拍卖会现场
Zhang Yongzhen and on the auction



张永珍和时任上海博物馆副馆长汪庆正
Zhang Yongzhen and deputy director of Shanghai
Museum Wang Qingzheng



制作过程
Working process

《海牙天下》中国当代雕塑展 荷兰海牙 开幕现场
THE HAGUE UNDER THE HAVEN Chinese Contemporary Sculpture
Exhibition in Holland 2011



原大的台灯
original size of the table lamp

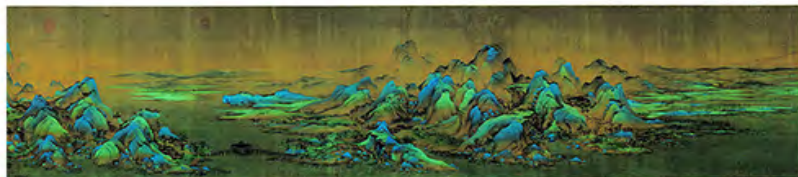
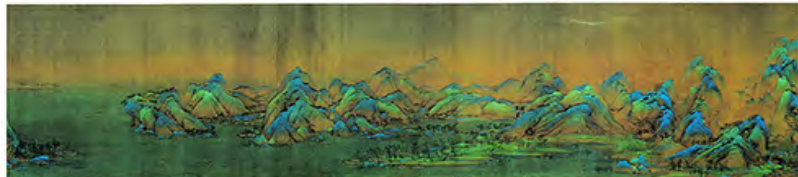
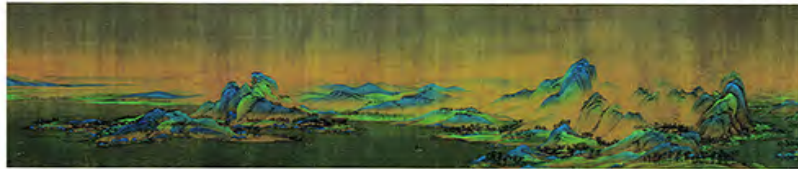
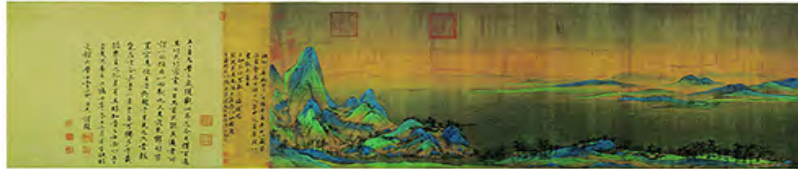


时任荷兰王妃马克西玛，为万里雅作品开灯，以示展览开幕
Princess Maxima switch on the light of Wan Liya's work for the opening



THOUSANDS MILES OF MOUNTAINS AND RIVERS blue & white porcelain size variable 2011
Silver Prize of Gyeonggi International Ceramic Biennale ,International Competition 2011

《千里江山图》2011 京畿道国际陶瓷双年展 银奖



千里江山图 北宋 王希孟
绢本 青绿山水 51.5 X 1191.5 cm
中国十大传世名画

THOUSANDS MILES OF MOUNTAINS AND RIVERS
One of top ten China's famous painting
from Song period by WANG XIMENG
51.5 X 1191.5 cm



龙山系列 瓷器 9X9X18cm 2018
Longshan Series porcelain 9X9X18cm

“Tao” of Fusion

融合之“道”

谢谢 The End