

port



Nata

liiy



Zu

b
an

folio



The project remakes the relationship between a person's memory and architectural environment, the idea that our memories are products of our body's experience of physical space. The works are concerned with rethinking artifacts of Industrial Archaeology, which is the systematic study of material evidence associated with the industrial past. A related concept is the idea of destruction as a transition between artificial and natural landscape.

This series of works explore the idea that artwork can make a chain of association with certain feelings or images that a person has seen before. Therefore the work has multiple markers, such as texture, size and colour, which can cause individual associations.



Industrial archeology
18 x 57 x 15 cm
chamotte, reducing firing,
t° 1250 C



↑ Industrial archeology
21 x 19 x 18 cm
porcelain
t° 1320 C



↑ Industrial archeology
23 x 58 x 27 cm
chamotte, reducing firing
t° 1250 C



↑ Industrial archeology
23 x 58 x 27 cm
chamotte, reducing firing
t° 1250 C



↑ Industrial archeology
23 x 58 x 27 cm
chamotte, reducing firing
t° 1250 C

↓ Industrial archeology
18 x 57 x 15 cm
chamotte, reducing firing
t° 1250 C



↑ Industrial archeology
23 x 20 x 18 cm
porcelain
t° 1320 C

↓ Industrial archeology
47 x 53 x 42 cm
chamotte
t° 1250 C



↑ Industrial archeology
47 x 53 x 42 cm
chamotte
t° 1250 C



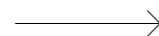
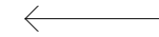
↑ Industrial archeology,
14 x 11 x 10 cm
chamotte, lava glaze
t° 1250 C



↑ Industrial archeology,
14 x 11 x 10 cm
chamotte, lava glaze
t° 1250 C



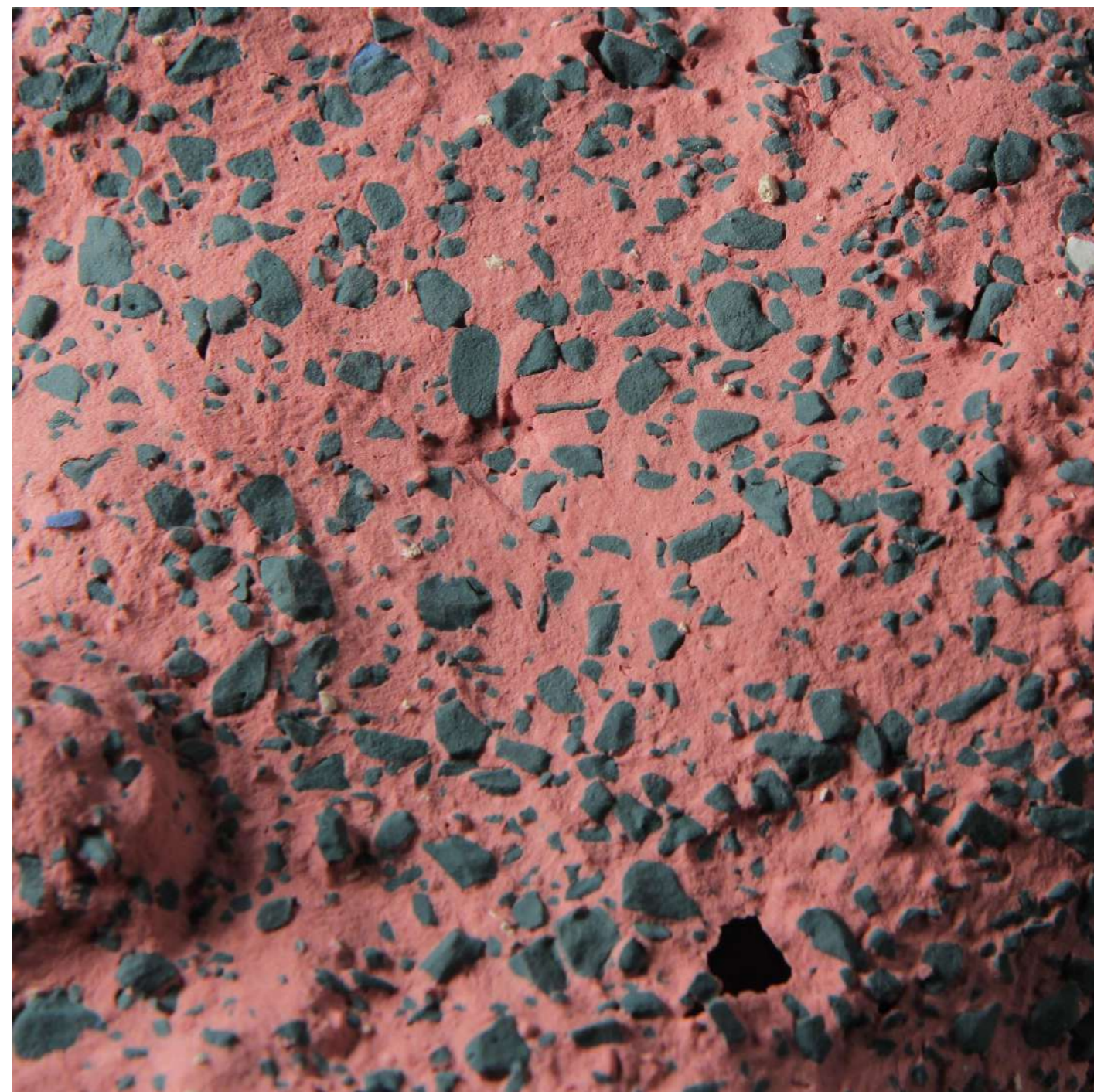
Industrial archeology
23 x 58 x 27 cm
chamotte, reducing firing
t° 1250 C



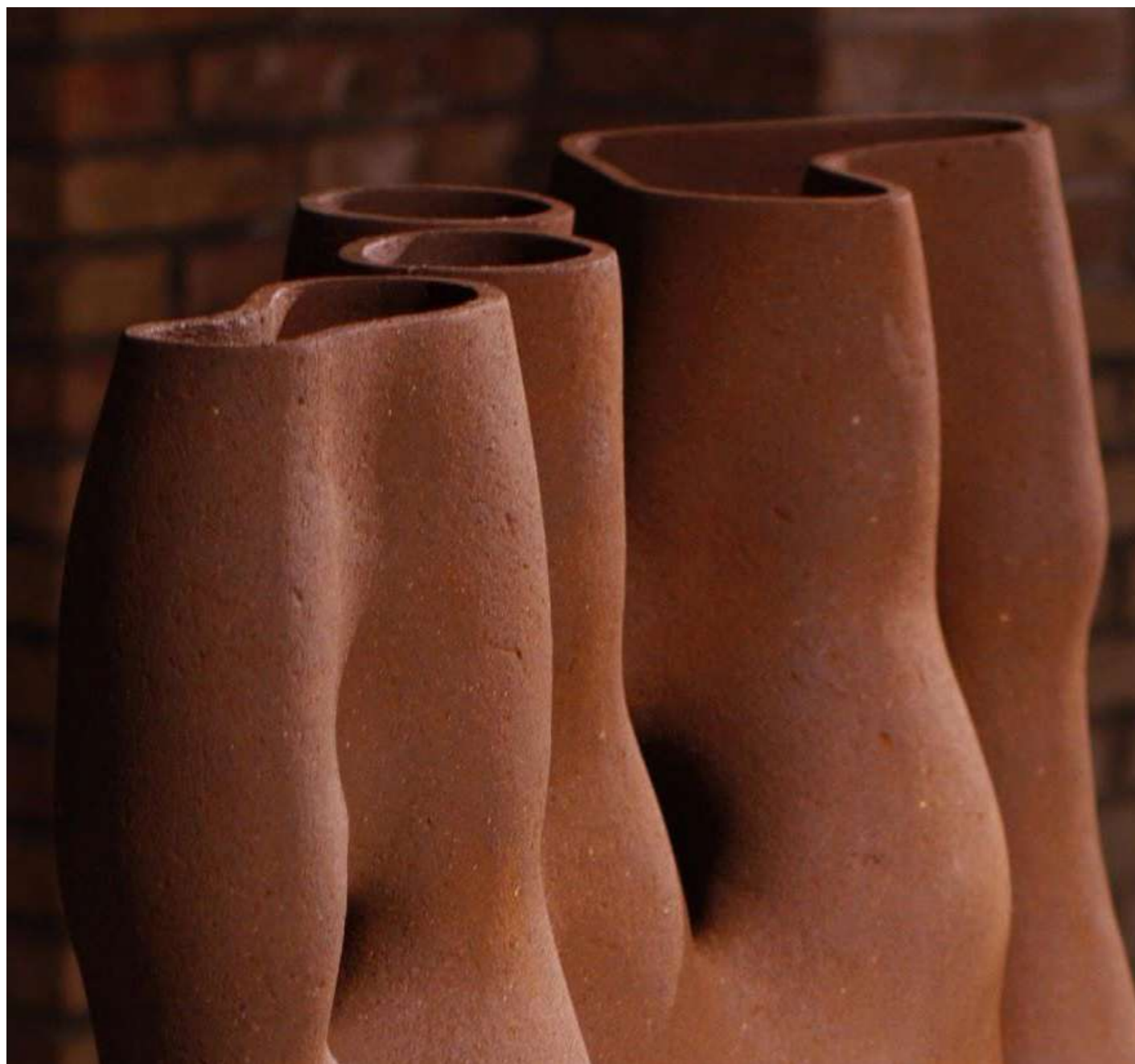
Industrial archeology
23 x 58 x 27 cm
chamotte, reducing firing
t° 1250 C



↑ Industrial archeology
21 x 19 x 18 cm
porcelain
t° 1320 C



↑ Industrial archeology
21 x 19 x 18 cm
porcelain
t° 1320 C



The series of works «Forest» refer to Raoul Franço ideas that plants have certain ways of communicating with the outside world. The biologist argued that plants constantly observe events and phenomena and store information about them.

«The numerous conducted experiments proved that plants have memory. They can accumulate and store impressions for a long time». Jagadish Chandra Bose Carl von Linne, the father of modern botany, declared that plants differ from humans and animals only in their own stillness.

According to scientist researches, plant cells react to processes in the human nervous system, emotional states of person. The idea of our team project is create space for calm. Where viewers can interact with ceramic objects as a living substance. One of the leitmotifs of this project is creating a space similar to the natural environment of human life. When person was free from urban pressure.

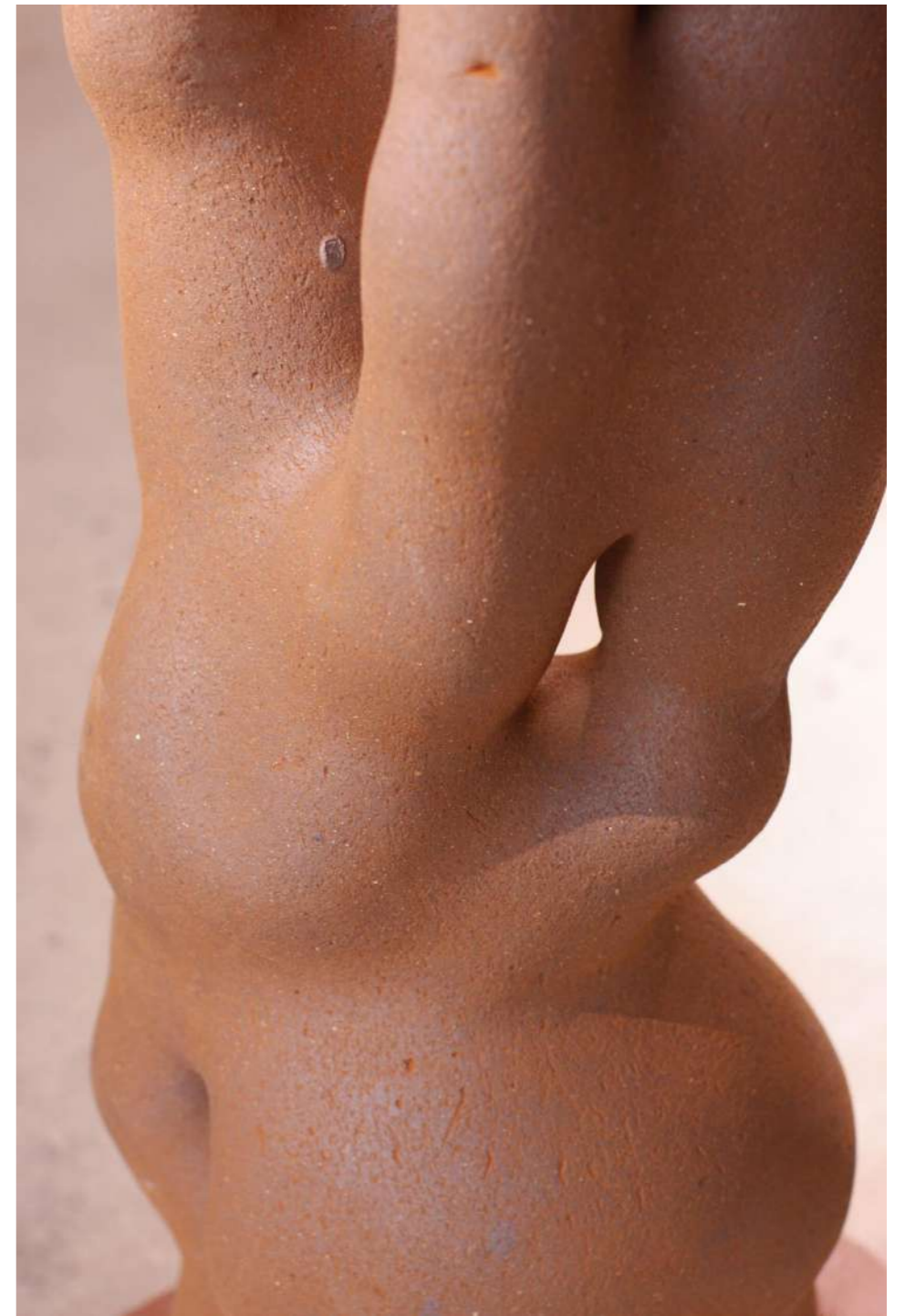
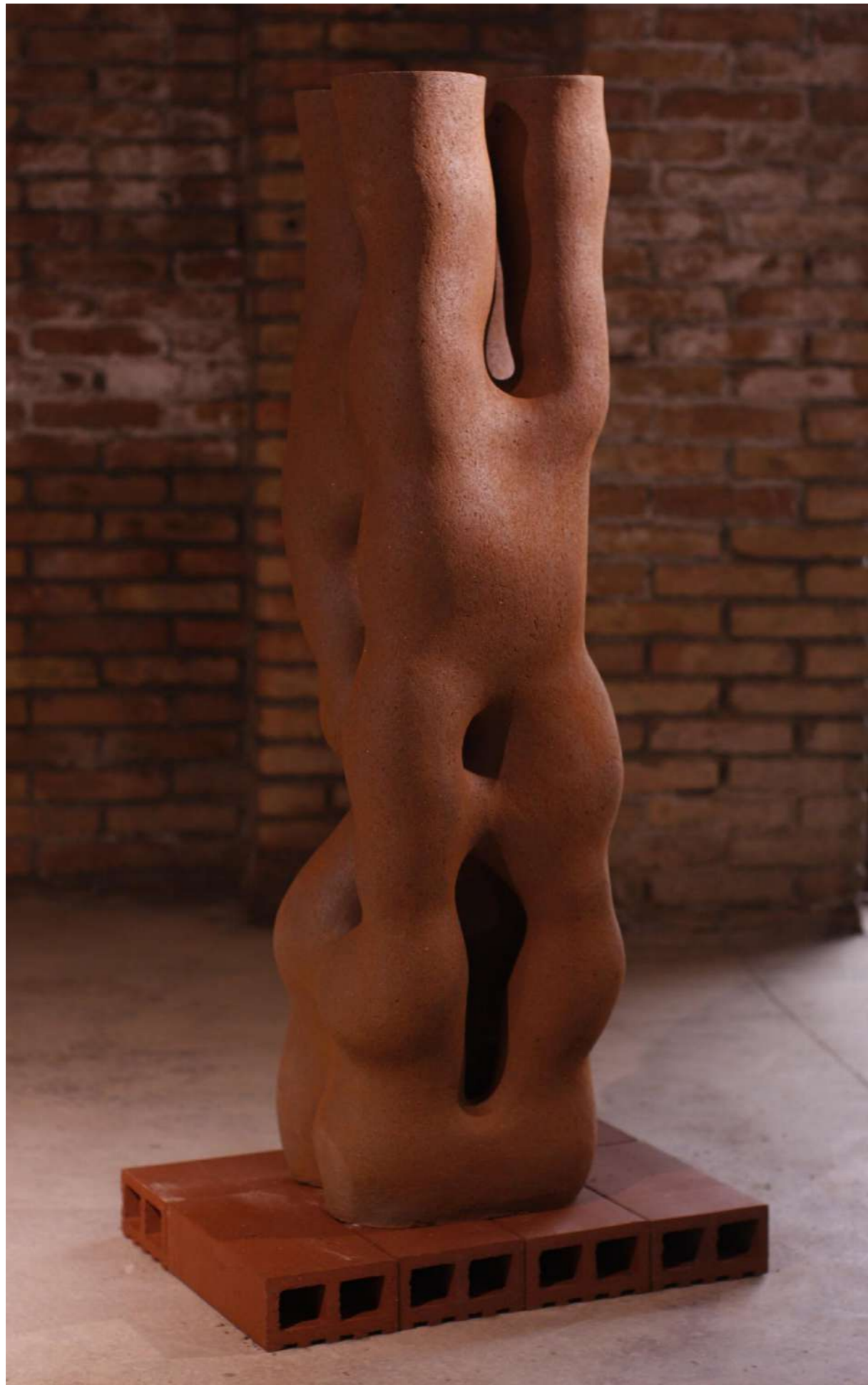


Forest
110 x 120 x 62cm
chamotte, reducing firing
t° 1250 C

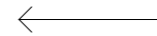


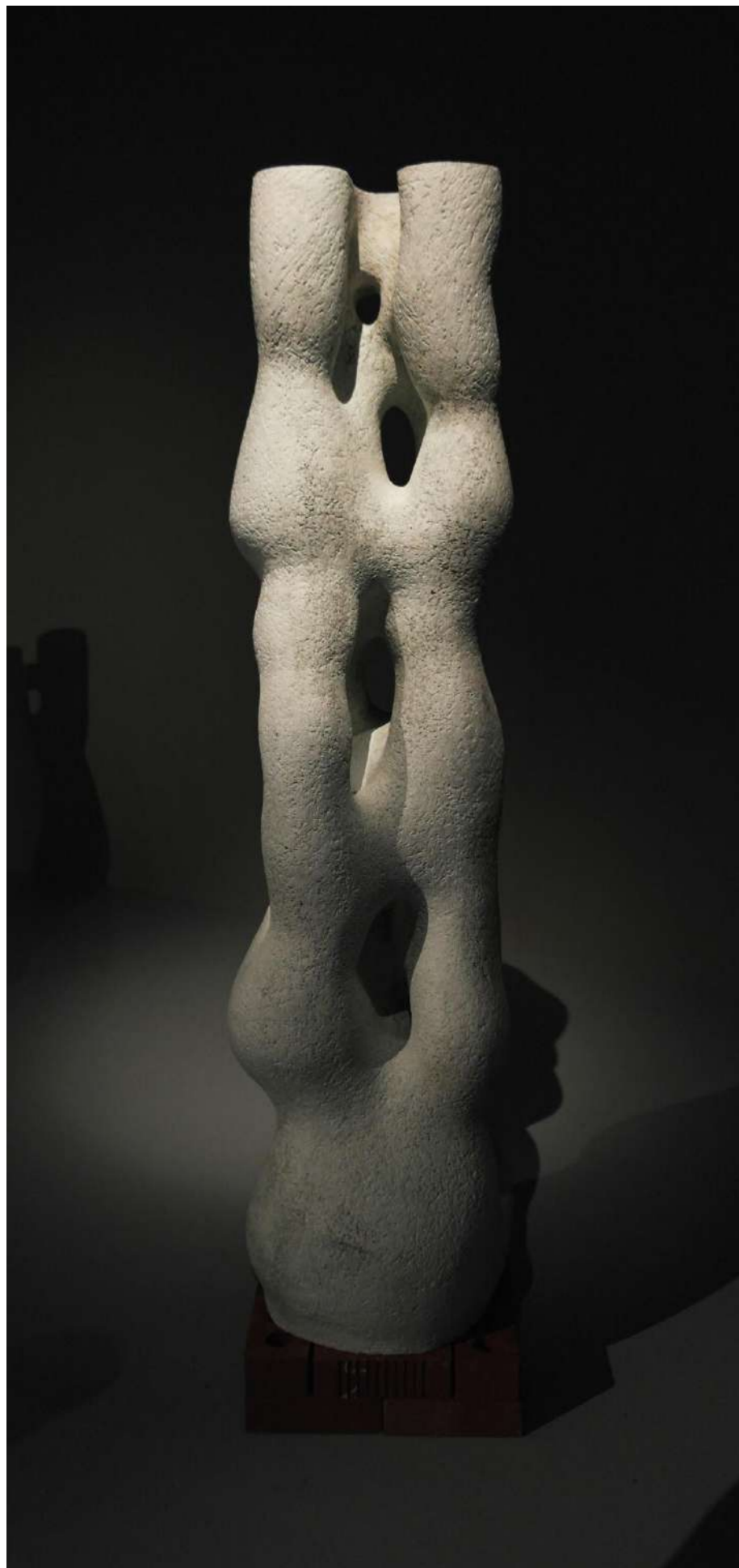
Forest
110 x 120 x 62cm
chamotte, reducing firing
t° 1250 C



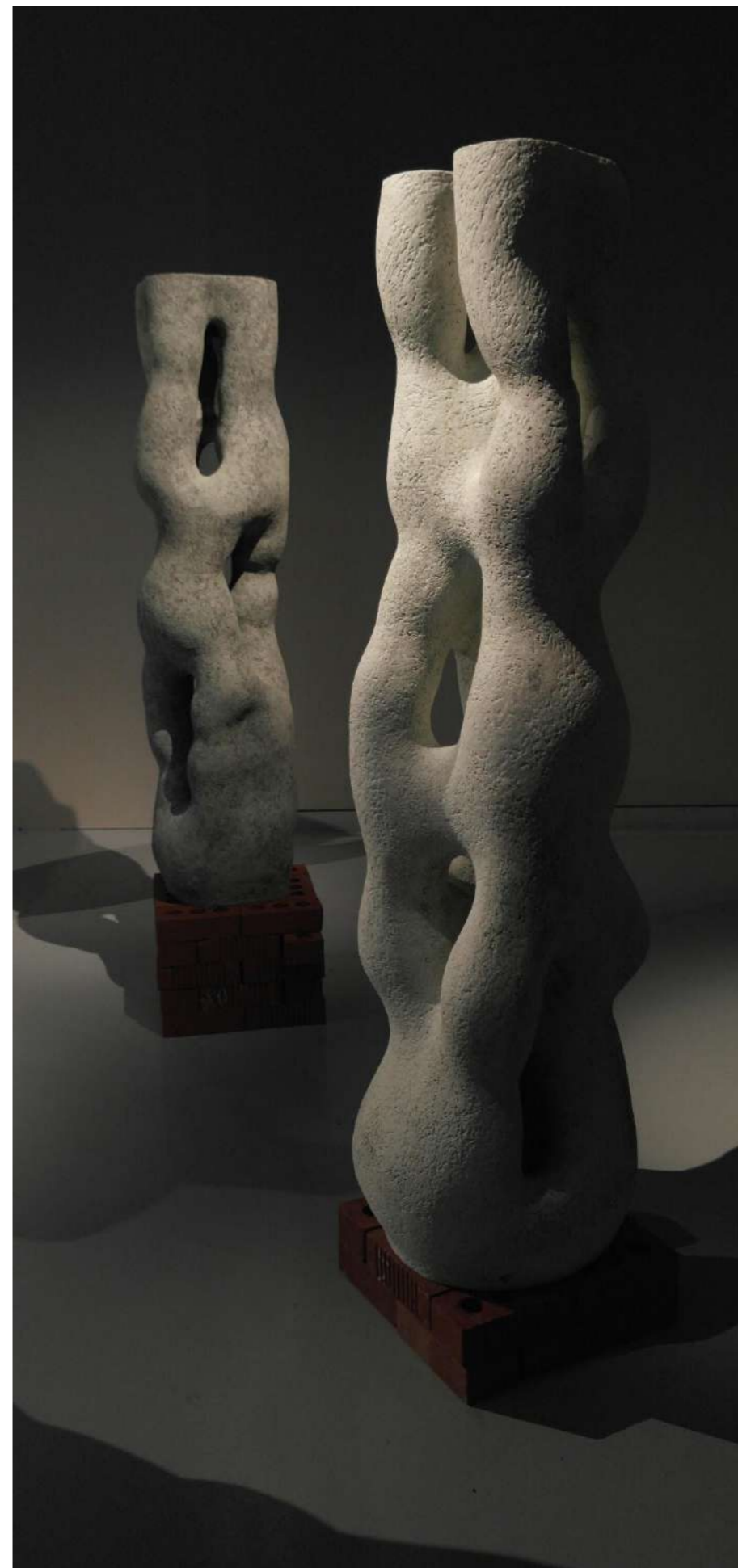


Forest
110 x 120 x 62cm
chamotte, reducing firing
t° 1250 C

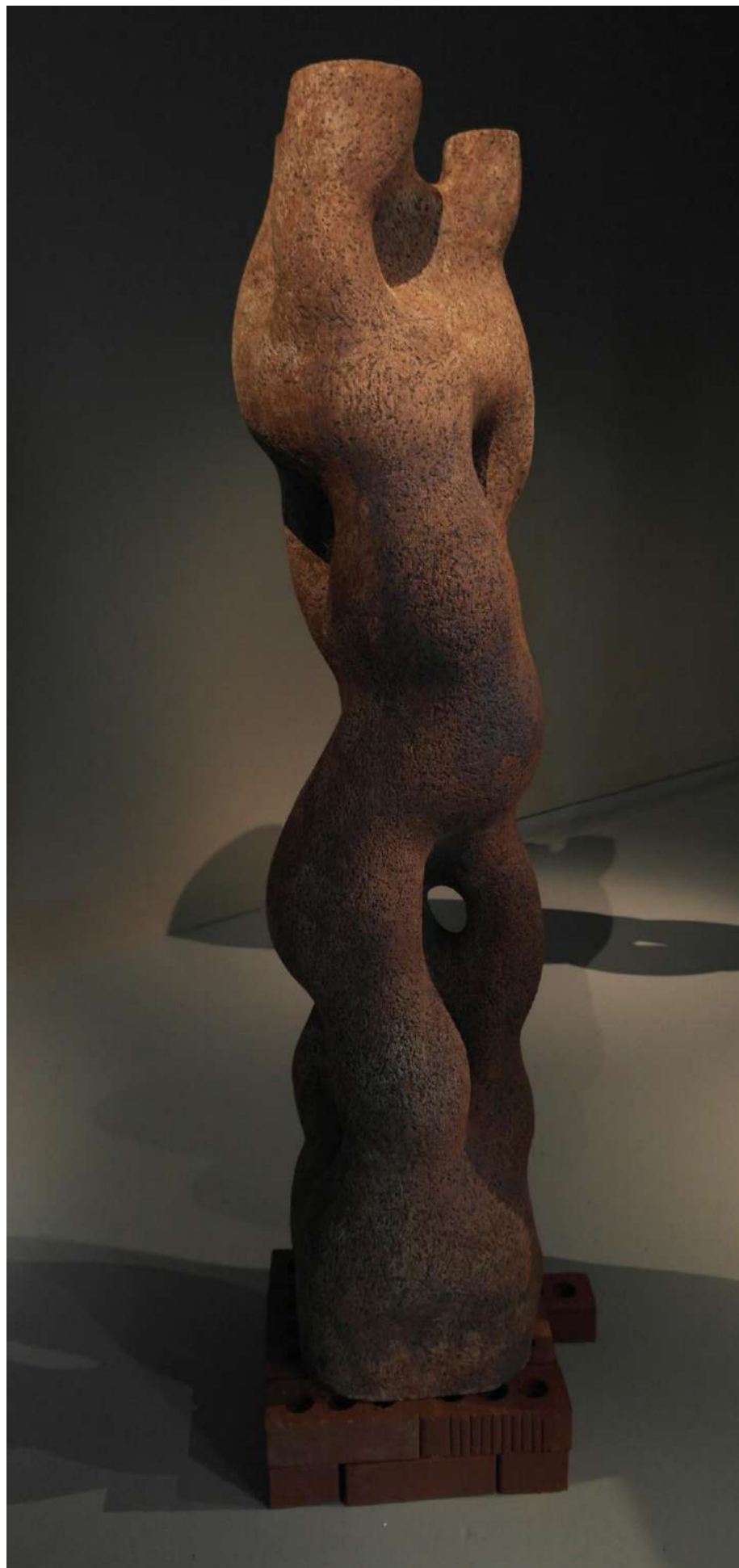




←
Forest
 161 x 63 x 65 cm
 chamotte, reducing firing,
 t° 1250 C



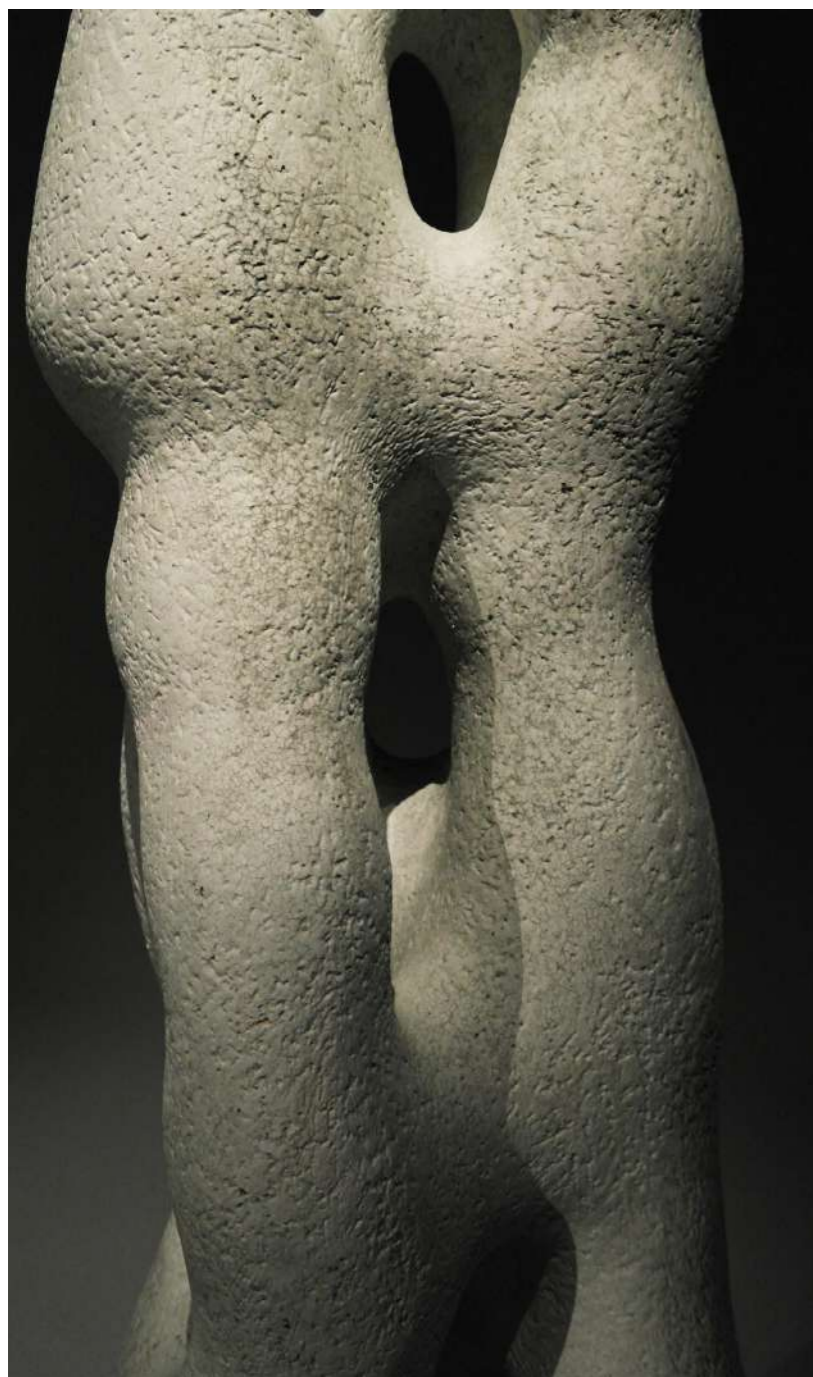
←
Forest
 161 x 63 x 65 cm
 chamotte, reducing firing,
 t° 1250 C



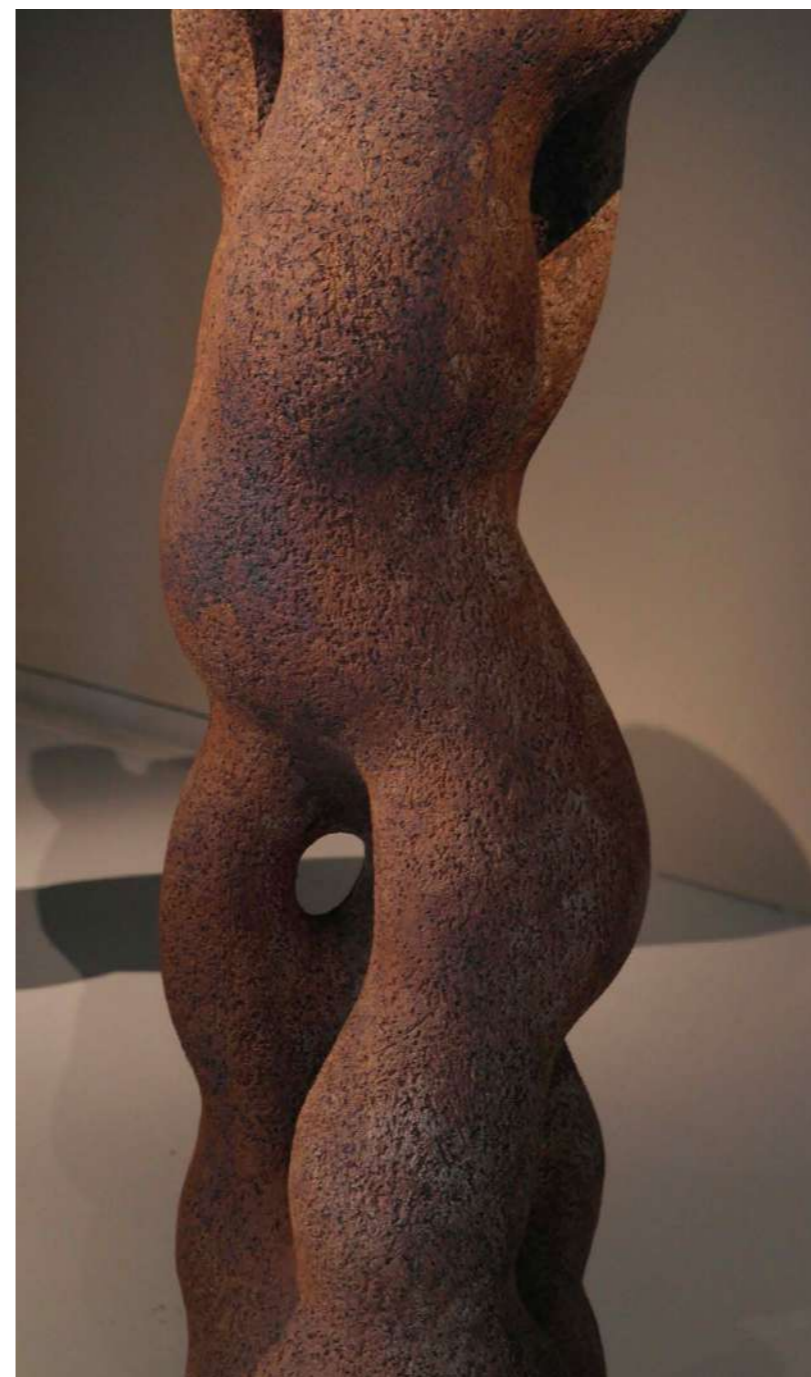
←
Forest
 159 x 62 x 59 cm
 chamotte, reducing firing,
 t° 1250 C



←
Forest
 159 x 62 x 59 cm
 chamotte, reducing firing,
 t° 1250 C



←
Forest
161 x 63 x 65 cm
chamotte, reducing firing,
t° 1250 C



←
Forest
159 x 62 x 59 cm
chamotte, reducing firing,
t° 1250 C



Nataliya Zuban 2020