



Shamai Sam Gibsh

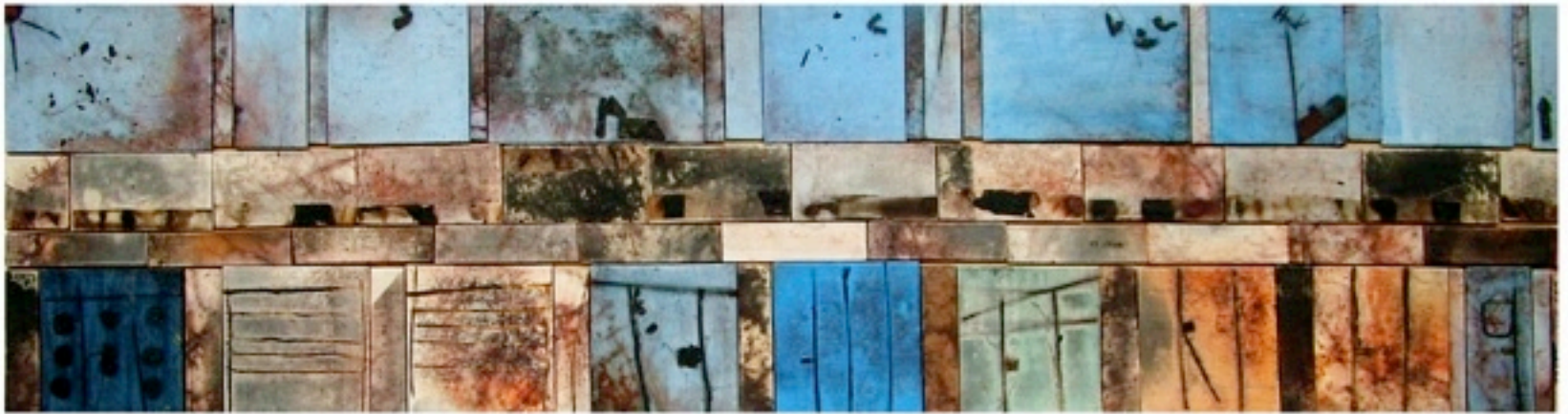
Sample work from 2007 to 2011



Segula 8

81x40x0.5 cm

Stoneware, Terra sigillata, copper, saggar firing in reduction



Doors under blue sky

140x40x1 cm

Stoneware, Terra sigillata, copper, saggar firing



Voyage through Jaffa

Stoneware, oxidation

16 sq. meter (180 sq.ft), commissioned by the City of Tel-Aviv





Ø 25x30 cm

Stoneware, Terra sigillata, copper, saggared firing



Ø 15x15 cm



Ø 19x16 cm



Ø 14x14 cm

Stoneware, Terra sigillata, saggar firing



Ø 45x15 cm

Stoneware, Terra sigillata, saggar firing



Ø 42x20 cm

Stoneware, Terra sigillata, copper, saggar firing



Voyage

25x40 cm

Stoneware, Terra sigillata, saggar firing

Internacional de Ceràmica l'Alcora Museum, Alcora, Spain



Stelae 2011

235x213x55 cm

Stoneware, Terra sigillata, iron printing, saggar firing

Kahana House, Ramat Gan Museum, Israel



Stelae 2011

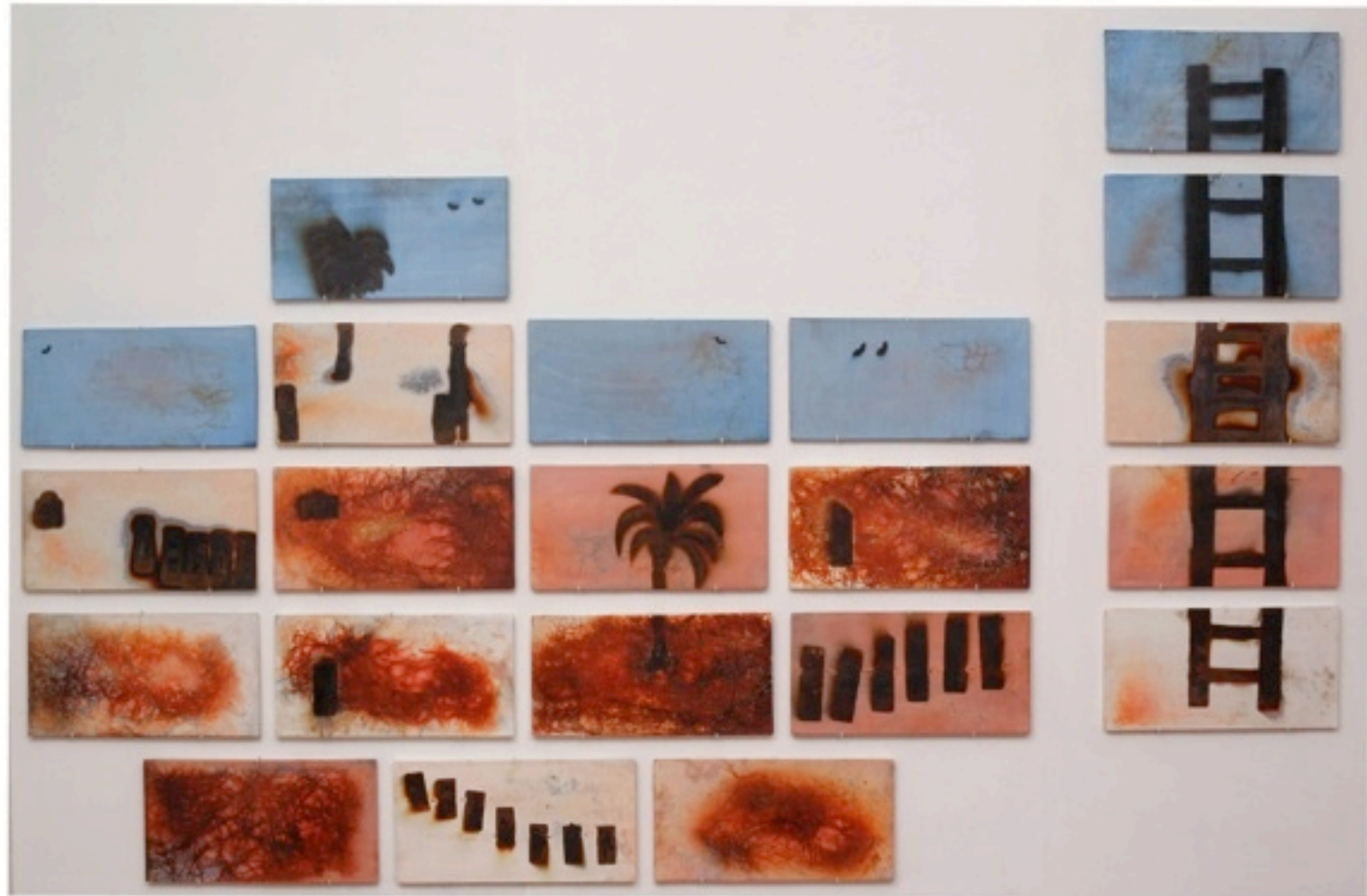
235x213x55 cm

Stoneware, Terra sigillata, Iron printing, saggar firing .

Kahana House, Ramat Gan Museum, Israel



24x40x0.5 cm
Stoneware, Terra sigillata, iron printing, saggar firing

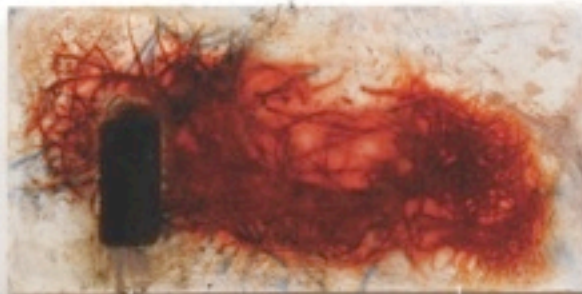


Teruah - Shevarim

295x230x1 cm

Stoneware, terra sigillata, copper, saggar firing

Kahana House, Ramat-Gan Museum, Israel



Details



In Between

70x35x14 cm

Stoneware, Terra sigillata, smoke firing



Walls 4

40x10x35 cm.

Stoneware, smoke firing



Vivo

50x35x12 cm

Stoneware, Terra sigillata saggar firing



Walls 2

70x12x25 cm

Stoneware, Terra sigillata, smoke firing



Fly Away

49x28x10 cm

Stoneware, Terra sigillata, smoke firing



Walls 1

70x12x31 cm

Stoneware, Terra sigillata, smoke firing



Soda Firing

Ø 8 to 14cm, h:12 to 20





Horse Hair Raku

Ø 12 to 15 cm, H: 35 to 42 cm



Naked Raku

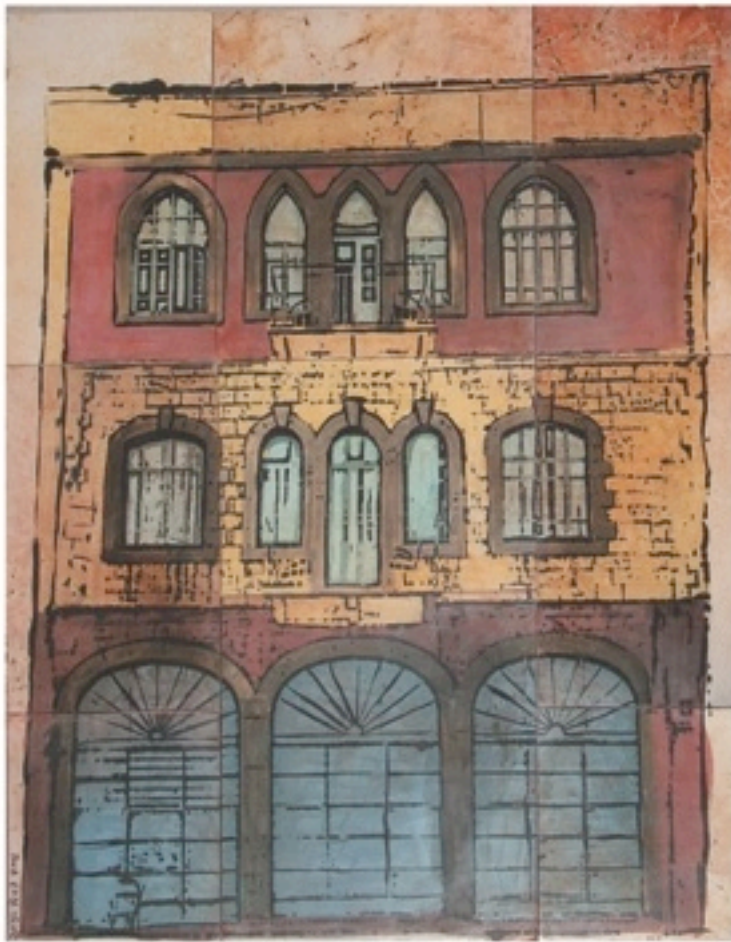
40x8x25 cm



Upward

120x40x90 cm

Stoneware, Terra sigillata, copper,
sagger firing



Tiles

40x60x0.5 cm

Stoneware, Terra sigillata, saggar firing



St. George (x 7)

76x20x0.5 cm

Stoneware, Terra sigillata, saggar firing



St. George

35x50 cm

Stoneware, Terra sigillata, saggar firing



“Jerusalem” Teapot

40x12x35 cm

Stoneware, Porcelain, Oxidation.

Biennale, Art & Craft Museum Shanghai, China



“Jaffa” Tea Pot

45x15x35 cm

Stoneware, Porcelain, Oxidation, Cone 7

Biennale, Art and Craft Museum, Shanghai, China



Shamai Sam Gibsh

Gibshs@gmail.com

<http://www.shamaigibsh.com>

Photography:
Shamai Gibsh
Ron Arda