



Liyu Tang

Associate Professor of Zhuhai Art College
Chairperson of the Ceramic Art Committee at Zhuhai Artists Association
Member of the Art Committee of Zhuhai Special Zone Art Institute
Resident Artist of Zhuhai Nanzhou Artist Village.
Member of the Guangdong Artists Association
Member of the Ceramic Art Committee of the Guangdong-Hong Kong-Macao Greater Bay Area Artistic Research Alliance
Specialized Art Tutor of Guangdong Rural Creativity Vocational Training Institute

Main Collections

- Artwork "Dialogues in Time" - Collected by the China Ceramic Museum
- The work "Left West and Right East"- collected by the China National Museum of Traditional Chinese Arts
- The work "Folding in Time" -collected by the "China White International Ceramic Art Award Contest Committee".
- Ceramic series "Summer" - Collected by the Guyuan Art Museum
- Blue and white porcelain series "Spring Splendor, Autumn Harvest" - Collected by the Guyuan Art Museum
- Blue and white porcelain artwork "Watermark · Ink" - Collected by the Guyuan Art Museum
- Blue and white porcelain artwork "Autumn Equinox series Fruit" - Collected by the Guyuan Art Museum
- Artwork "Yan" - Collected by the Zhuhai Museum
- Artwork "Undercurrent" - Collected by the Purple Gold Award Ceramic Art Design Competition Organizing Committee
- Artwork "House · Continuous Birth" - Collected by the China Design Original Liangzhu Ceramics Museum
- Artwork "House · Half-Life" - Collected by the Henan Ancient Ceramics Museum
- Artwork "Swaying in Time" - Collected by the Foshan Art Creation Institute



作品是生活的影子
一个人走过的路
所有的所有
来来又去去
最终落于掌中
融于土里
凝成
我的 时光



Award-winning experience

- 2018, Yi, Red Dot design award, Essen, Germany
- 2018, Yi, The 9th Governor's Cup Industrial Design Competition, Excellent Award/third prize, Guangzhou, China
- 2018, Yi, the 11th Strait craft excellent works exhibition, silver award, Xiameng, China
- 2018, Flowers in Time, the Eleventh China Ceramic Art Exhibition, silver award, Longquan, China
- 2017, House, the 2nd China Ceramic Art Design Exhibition, silver award, Yuzhou, China
- 2016, The Drifting Bottle, the Sixth Guangdong Provincial Ceramic Art Fine Works Exhibition, silver award, Chaozhou, China
- 2016, The Travel Parcel, Guangdong Provincial University Ceramic Art Exhibition, third prize, Foshan, China
- 2016, Joyous Waters, the Ninth "China Ceramics Award" Chinese Ceramic Product Design Competition, bronze award, Hebi, China
- 2016, Undercurrent, the Third "Purple Gold Award "Ceramic Art Design Competition, Excellent Award, Nanjing, China
- 2016, One City One Landscape, 2016 Nantong Young Designer Exhibition, Excellent Award, Nantong, China
- 2016, First Encounter, the Fifth Zhuhai Fine Arts Biennial, Excellent Award, Zhuhai, China
- 2014, Fading Memories, the Second Zhuhai Young Artists' Exhibition, Excellent Award, Zhuhai, China
- 2014, Fertility, the First Zhuhai Young Artists' Exhibition, Excellent Award, Zhuhai, China
- 2014, Autumn Equinox Series-Leaf, Guangdong Provincial University Ceramic Art Exhibition, third prize, Guangzhou, China
- 2013, Autumn Equinox Series-Fruit, the Fifth Guangdong Provincial Ceramic Art and Design Innovation Competition, Gold Award, Chaozhou, China

Artistic Achievements

- 2024, "The Bestowal of White", 14th National Artworks Exhibition of Fine Arts and Ceramic Art Works Exhibition, Nanchang, China
- 2024, "Sand Castles in Time", Ceramic Art "Her" Power – Z Generation Female Ceramic Artists’ Works Exhibition, Jingdezhen, China
- 2024, "Baroque in Time", Jie Shang – Seventh China Contemporary Ceramic Art Experimental Works Invitational Exhibition, Jinan, China
- 2024, "Wings of the Sky", 6th Guoyuan Fine Arts Award and 9th Zhuhai Art Biennale – Outstanding Work Award, Zhuhai, China
- 2024, "Traveling Packages", "Coast on August 18th", National Art Fund’s Invitational Exhibition of Qinghua Works by Trainees, Jingdezhen, China
- 2024, "Left West and Right East", Red and Green Glaze Art Innovative Design Talent Training Project Outcome Work Exhibition, Beijing, China
- 2023 The Folding of Time, The 3rd Blanc De China International Ceramic Art Award, Hangzhou, China
- 2022 Time and Temperature—Contemporary Ceramics Arts Invitational Exhibition of Foshan, Foshan, China
- 2021 Sandcastle in Time, the third China Contemporary Ceramic Art Exhibition, Nanchang, China
- 2021 Baroque in Time, the seventh China Western Ceramic Art Biennial, Chengdu, China
- 2021 The Folding of Time, See the Unseen series exhibition—the Ceramics You Have Never Seen Before, Shanghai, China
- 2020 Baroque in Time, The inaugural Dehua “the Blanc De China” Chinese Traditional Ceramic Biennial, Dehua, China
- 2020 Swaying in Time, “Yi Xing” joint exhibition, Foshan, China
- 2019 Swaying in Time, Shanxi Contemporary International Ceramic Art Exchange Exhibition, Jinzhong, China
- 2019 "Moments of Difference" Double exhibition, featuring oil paintings by Huang Jianbo and ceramic art by Liyu Tang, Zhuhai, China
- 2018 The Travel Parcel, The third Guangdong Contemporary Ceramic Art Exhibition, Guangzhou, China
- 2017 Hybrid Entities, Space • Transformation– Xi’an International Contemporary Ceramic Art Exchange Exhibition, Xi’an, China
- 2017 Fragments of Memory, Achievements Exhibition the program of Cultivating Inhibitors and Innovators of the Traditional Jingdezhen Folk Blue and White Porcelain Techniques, Jingdezhen, China
- 2016 Fading Memories, Korea–China International Exchange Exhibition2016, Suwon, Korea
- 2015 Wind, Zhuhai Female Artists Exhibition, Zhuhai, China
- 2015 "Three-Flavored Life Stories-Part two", Zhuhai, China
- 2015 "Three-Flavored Life Stories" double exhibition, Zhuhai, China
- 2015 Three Nos series The First Guangdong Provincial University College Award Biennial Exhibition, Guangzhou, China
- 2012 Watermark • Ink, The First China Contemporary Ceramic Art Exhibition, Beijing, China





flag in Time

93x36x55cm

1320°C porcelain



Walking through Time

93x60x35cm

1320°C porcelain



Swaying in Time
40x16x23cm
1320°C porcelain



The Flapping in Time
52x36x65cm
1320°C porcelain



The Castle in Time
30x10x21cm
1320°C porcelain



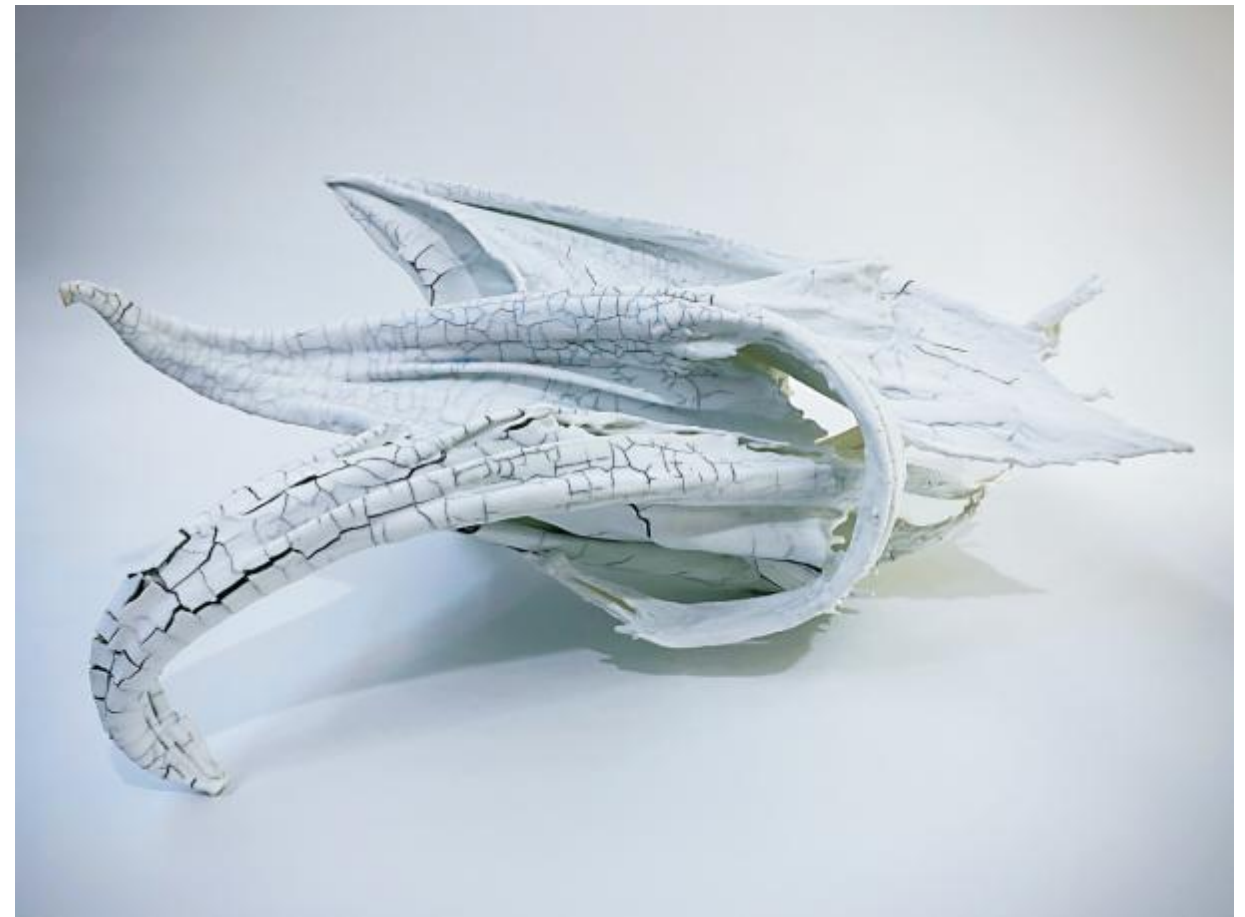
Sandcastle in Time
115x55x36cm
1320°C porcelain



The tendrils of time

70x46x30cm

1320°C porcelain



Chrono Vessel

75x48x35cm

1320°C porcelain



Vestiges of Time
93x36x45cm
1320°C porcelain



Baroque in Time
60x45x63cm
1320°C porcelain



Blossoms in Time

40x26x37cm

1320°C porcelain



Timeless Tree

89x48x40cm

1320°C porcelain



The Bestowal of White

88x45x53cm

1320°C porcelain



Threads Entwined in Time

54x42x52cm

1320°C porcelain



The Folding of Time

115x55x36cm

1320°C porcelain



Blue and white porcelain

如果有一天
你与我的某件作品不期而遇
它什么也不说 就能打动你
我会非常欣喜
因为
这才是艺术本该有的样子



风
75x50cm
青花瓷板画

《周行不殆》之二

世间太多的纷扰扰 错综复杂
不可触摸 却缠绕周身
若能常清静 天地悉皆归



《周行不殆》系列
60x60cm
青花瓷版画



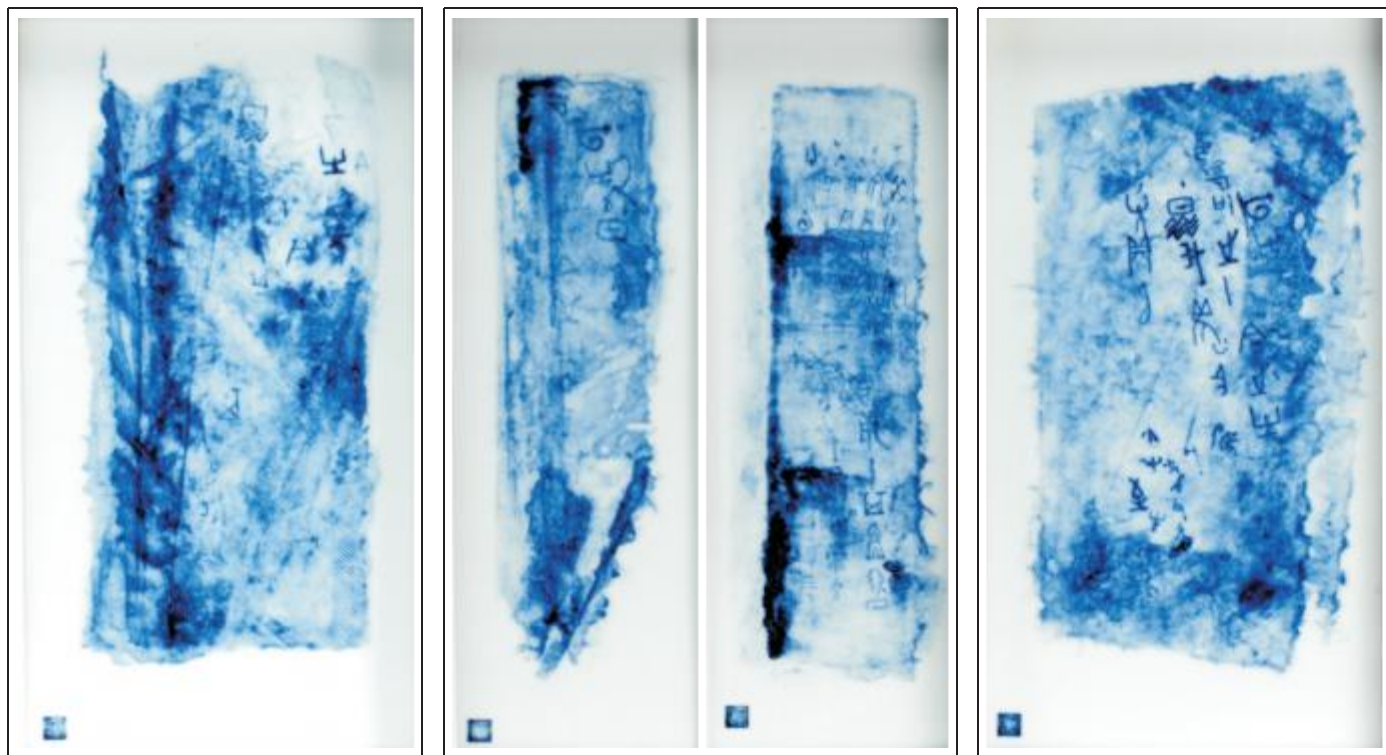
《周行不殆》之一

混沌开 分阴阳
轮转更迭 万物始苍苍

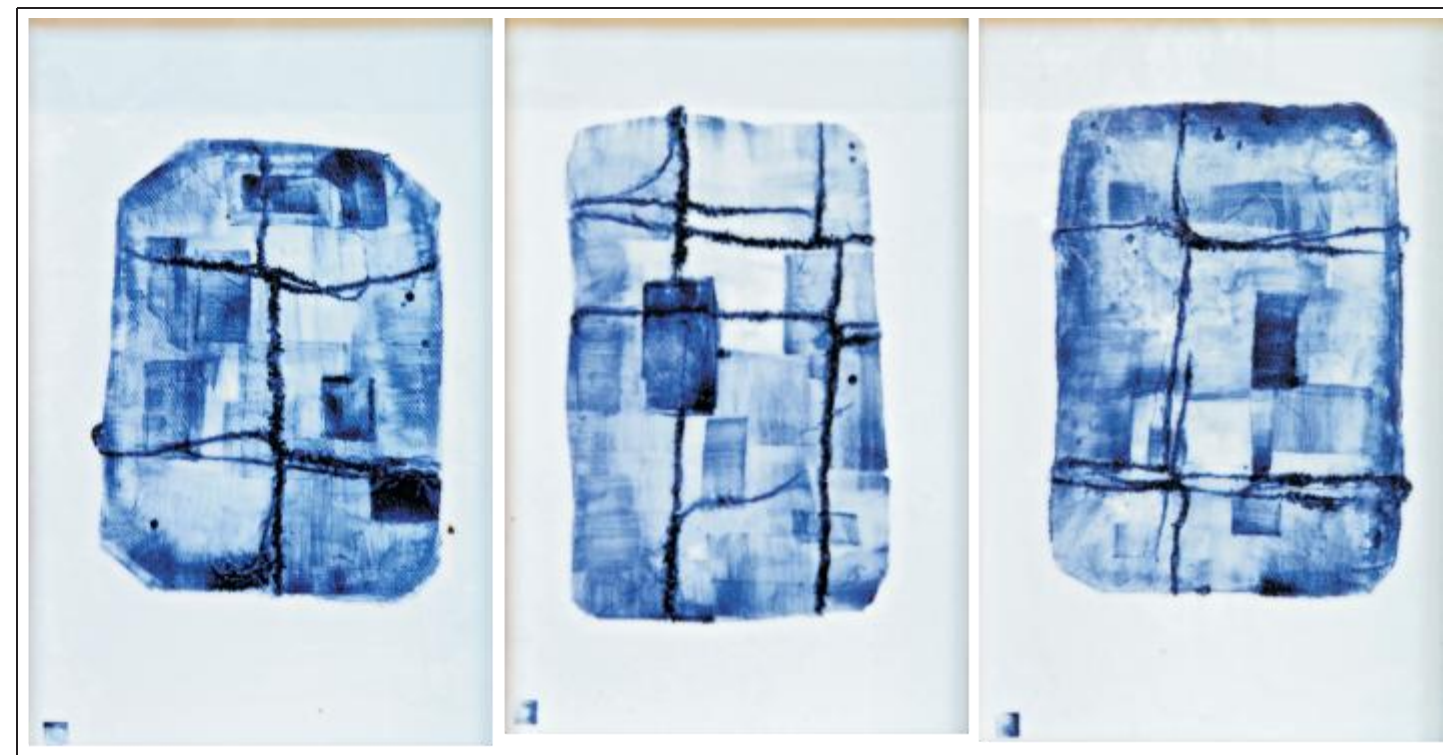
「色含轻重雾 香去引来风」



《重雾·来风》系列
60x60cm
青花瓷版画



消逝的记忆
_95x50cm
青花瓷版画



旅行的包裹
_95x50cm
青花瓷版画



漂流瓶&贝壳
青花装置

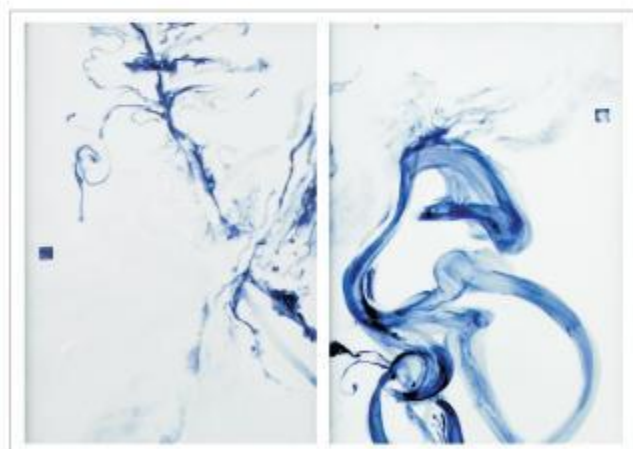


初见
35x35x45cm
青花

初见

似清风吹过树枝的摇曳
幸福的时光划过水面的波纹
又好似一只缓缓而行的蜗牛
在自己的庭院路过
留下身后一道闪烁的淡痕
.....

[水印·墨迹] 系列



[水印·墨迹]系列

高125cm 直径46cm
2012 青花



[墨迹·痕]系列之[影映]

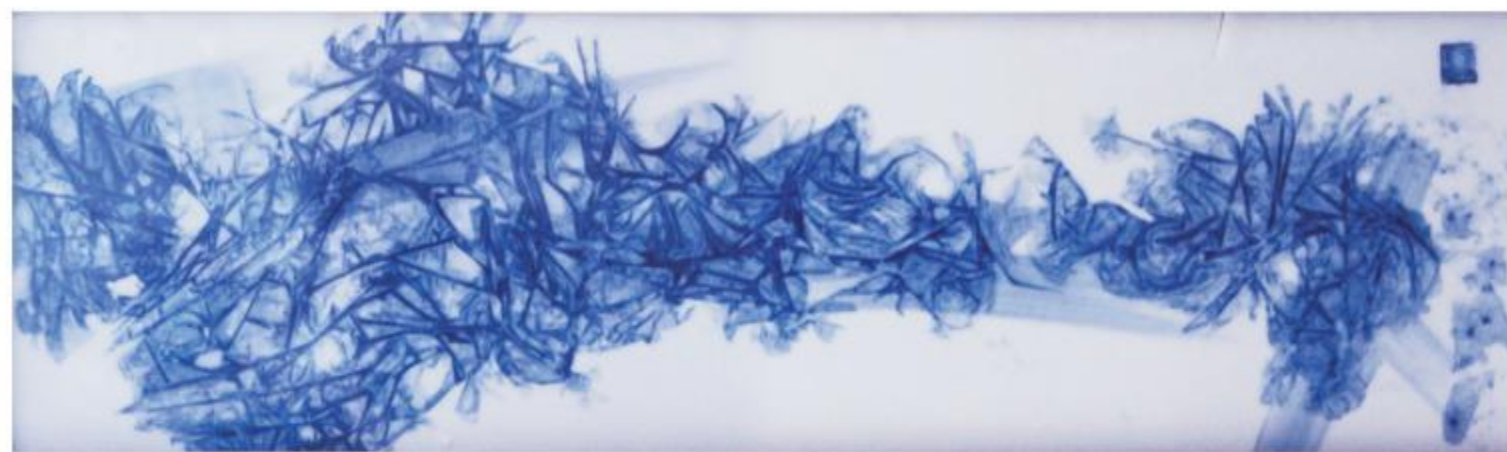
高40cm 宽95cm
2012 青花

[墨迹·痕] 系列

[墨迹·痕]系列青花分[影映]、[互动]、[对峙]、[相融]、[你我]五幅，如同与人\事交往的良性过程：从最初类似气息的[影映]到进一步沟通[互动]；在[互动]后发现分歧，开始[对峙]；在[对峙]中逐渐磨合，开始[相融]；经过[相融]的彼此，不是彻底失去自我，呈现出的依然是你是你、我是我，但根部彼此血脉相连。我们，生命中经历的一切，无论悲欢，它都会在心底留下痕迹，只是你不一定发觉，只有当某一个点或事触及时才发现，它依然在那里，或多或少……

「水印·痕」系列

陶艺七十二道工序，从最初炼泥开始，任何一道工序都马虎不得，任何一步都会留下痕迹，任何的疏忽都可能变为最后的废品，如同我们的人生，不知道老天爷在什么角落，放上那么一个人，让你经历一些事，或许不经意间就产生巨大影响，对于老天爷的随机安排，我们唯一能做的就是「选择」——选择是否翻开他放在你面前的那张牌，所以，为了自身的圆满修行，看好书，交好友！



「水印·痕」系列之[天]

桃之夭夭，灼灼其华。之子于归，宜其室家。
桃之夭夭，有蕡其实。之子于归，宜其家室。
桃之夭夭，其叶蓁蓁。之子于归，宜其家人。

高20cm 宽55cm
2012 青花



「水印·痕」系列之[符]

高85cm 宽40cm
2012 青花



「水印·痕」系列之[嵩]

南有樛木，葛藟荒之。
乐只君子，福履将之。
南有樛木，葛藟荒之。
乐只君子，福履将之。
南有樛木，葛藟荒之。

高30cm 宽35cm
2012 青花



羽
58x30x30cm
釉里红



红叶
50x35x35cm
釉里红



Design

创作 是遵循自我内心的感受
而设计 则是为他人服务
这是两条不同的路



reddot design award
winner 2018



以东方建筑美学为设计元素
下部的宽沿设计
方便卫生端取，也为汤勺提供摆放空间
多元的收纳设计
使器皿变得有趣且具观赏性



舍

站在城市的中央，透过钢筋水泥的禁锢，恍惚间看见故乡的老房，
象安静的鱼，青瓦叠交，鳞次节比，一片片青瓦如细密的鳞，在江
南烟雨中泛着幽幽青光，那里凝结着光阴的故事。

铺满落花的青瓦，檐头滴落的雨丝，老猫踏过屋脊的清脆，庭前斑
驳的树影……瓦上四季轮回，檐下是我儿时和家人共度的安然岁月，
黄梅雨落，青瓦润泽，弥留的，是不散的家的温度……

人们常说，回不去的地方叫故乡，到不了的地方叫远方。而我不能
忘却的是旧时江南的青砖黛瓦。

一砖一瓦，以水和泥，于烈火中烧结，将瓦叠于椽木之上，搭砖建
“舍”，遮风避雨，家人团聚。

瓦在，家在。

得舍，避风雨。

